

Environmental Justice Element Workshop



February 20th, 2024

6:30 PM

Environmental Justice Team



March JPA

- Dan Fairbanks, Planning Director
- Jeffrey Smith, Principal Planner
- Lauren Sotelo, Senior Planner
- Nina Schumacher, Business Development Specialist

Michael Baker International

- Alicia Gonzalez, Environmental Justice Element/Community Outreach Specialist
- Noelle Anderson, Environmental Justice Element/Community Outreach Specialist

Spanish Translator

- Brenda Bernabe, Robert-Half Co.

Background: Environmental Justice (EJ)



“The fair treatment of people of all races, cultures, and incomes with respect to the development, adoption, implementation, and enforcement of environmental laws, regulations, and policies.”

Gov. Code Section 65040.12(e)



Background: Vulnerable Populations



California Communities Environmental Health Screening Tool: CalEnviroScreen

The California Communities Environmental Health Screening Tool ("CalEnviroScreen") is a data tool developed by CalEPA's Office of Environmental Health Hazard Assessment (OEHHA) pursuant to Health and Safety Code Section 39711 and other statutory requirements. CalEnviroScreen provides statewide data that can be used to identify communities disproportionately impacted by, or vulnerable to, environmental pollution and contaminants. The mapping tool contains 12 indicators related to pollution burden and 8 indicators that track population characteristics and other vulnerabilities.

CalEnviroScreen is used by CalEPA and its boards and departments to aid in administering environmental justice grants, promote compliance with environmental laws, prioritize site-cleanup activities and identify opportunities for sustainable economic development. It is also being used to identify disadvantaged communities in California pursuant to SB 535 and AB 1550 and Health and Safety Code Section 39711.

CalEnviroScreen is available at:

<https://oehha.ca.gov/calenviroscreen/report/calenviroscreen-30>

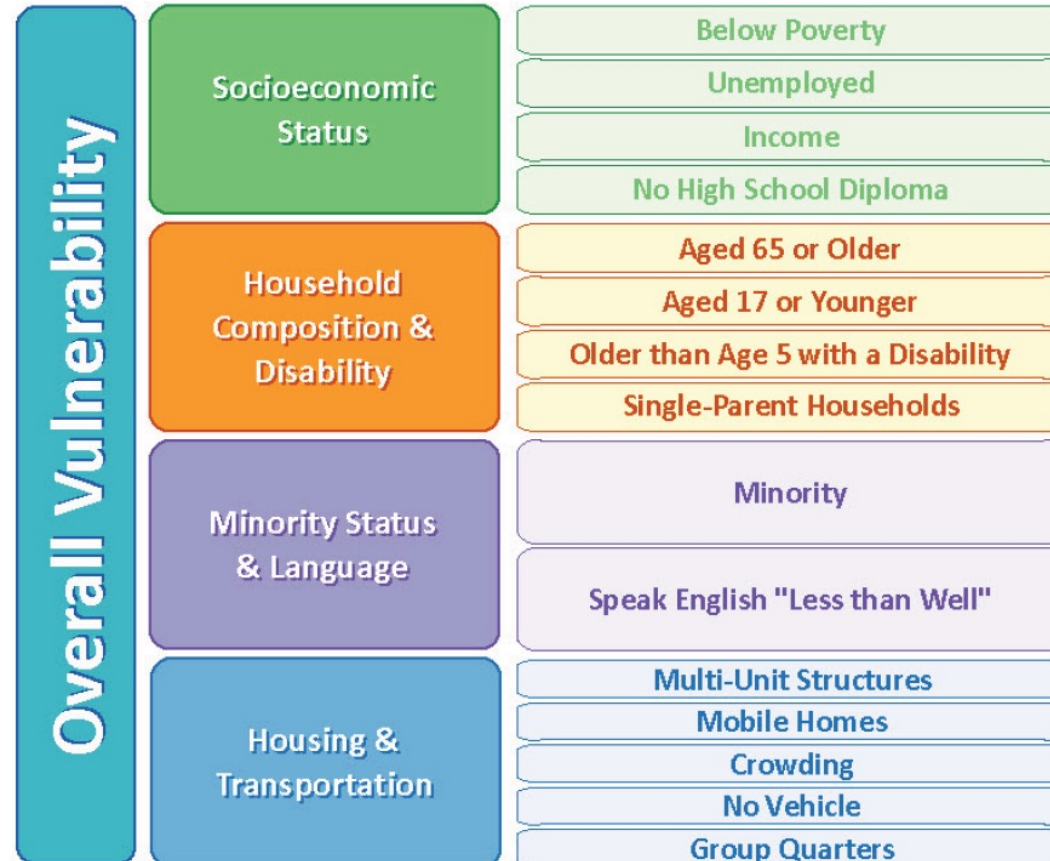
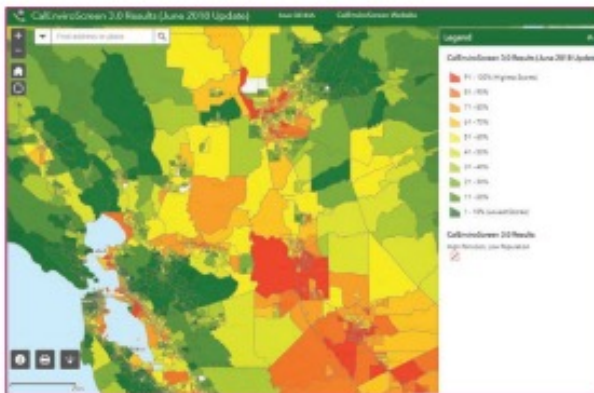
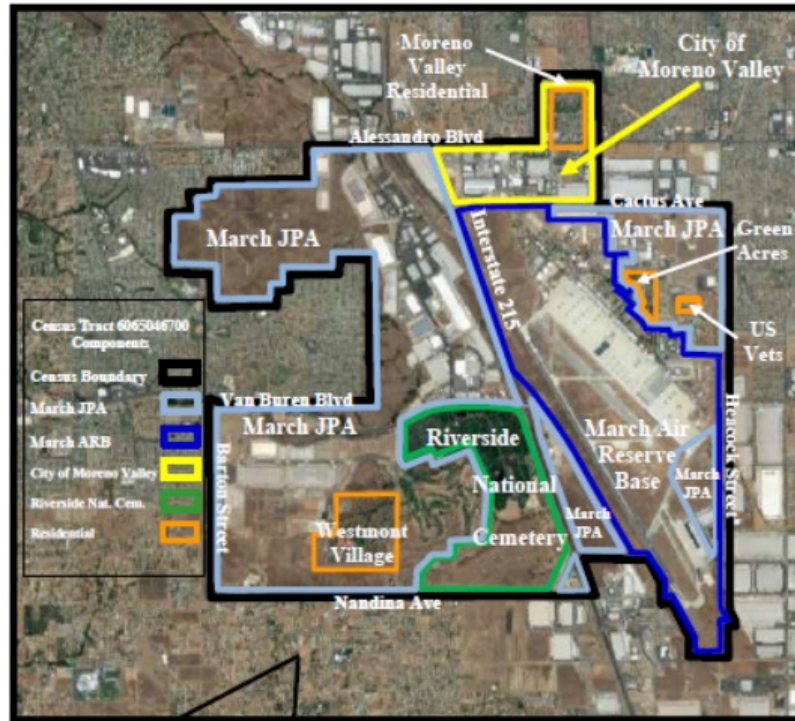


Figure 1. *Social Vulnerability Index themes and social factors*

Centers for Disease Control and Prevention (CDC). Planning for an Emergency: Strategies for Identifying and Engaging At-Risk Groups. A guidance document for Emergency Managers: First edition. Atlanta (GA): CDC; 2015.

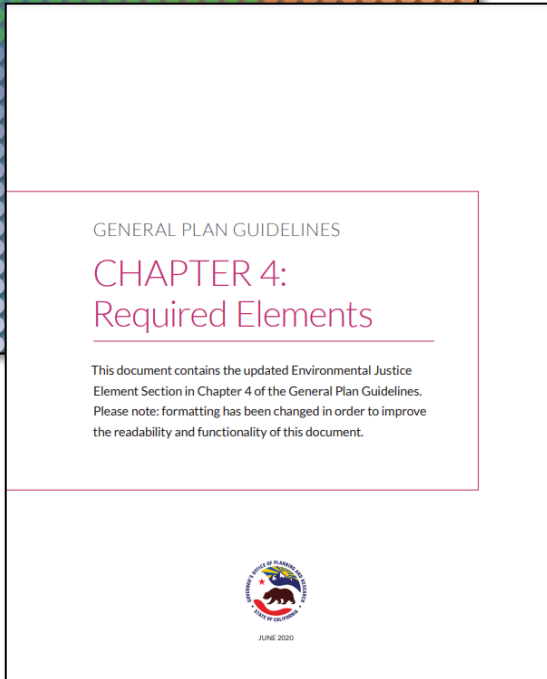
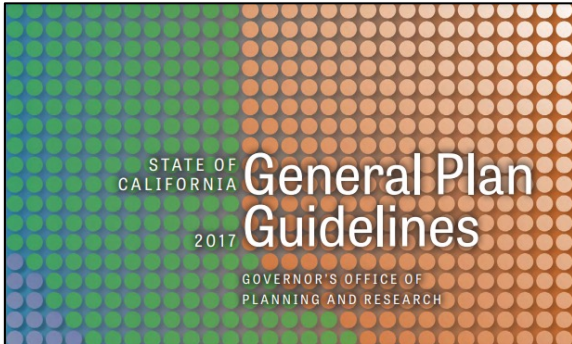
Impacted Communities



Census Tract 6065046700

- CalEnviroScreen Census Tracts with score of 75 or higher
- Census Tracts at or below the statewide median income
- Census Tracts at or below HCD's state income limits

Statutory Requirements



Completeness Checklist

Statutory Citation	Brief Description of Requirement
Gov. Code § 65302(h)(1)	Identify disadvantaged communities within the area covered by the general plan. (Note: see guidance provided earlier under Step 1)
Gov. Code § 65302(h)(1)(A)	Identify objectives and policies to reduce exposure to pollution including improving air quality in disadvantaged communities.
Gov. Code § 65302 (h)(1)(A)	Identify objectives and policies to promote public facilities in disadvantaged communities.
Gov. Code § 65302(h)(1)(A)	Identify objectives and policies to promote food access in disadvantaged communities.
Gov. Code § 65302(h)(1)(A)	Identify objectives and policies to promote safe and sanitary homes in disadvantaged communities.
Gov. Code § 65302(h)(1)(A)	Identify objectives and policies to promote physical activity in disadvantaged communities.
Gov. Code § 65302(h)(1)(A)	Identify objectives and policies to reduce any unique or compounded health risks in disadvantaged communities not otherwise addressed above.
Gov. Code § 65302(h)(1)(B)	Identify objectives and policies to promote civic engagement in the public decision-making process in disadvantaged communities.
Gov. Code § 65302(h)(1)(C)	Identify objectives and policies that prioritize improvements and programs that address the needs of disadvantaged communities.

EJ Element Organization



Civic Engagement



Availability and accessibility of information, opportunities to participate, access to ballot boxes and polling places

Health Risk Reduction



Pollution exposure, food access, safe and sanitary homes, physical activity

Public Facilities



Health Care Facilities, facilities to maintain community health

Other



Policies that do not relate to civic engagement, health risk reduction, and public facilities

Benefits of Adopted EJ Element

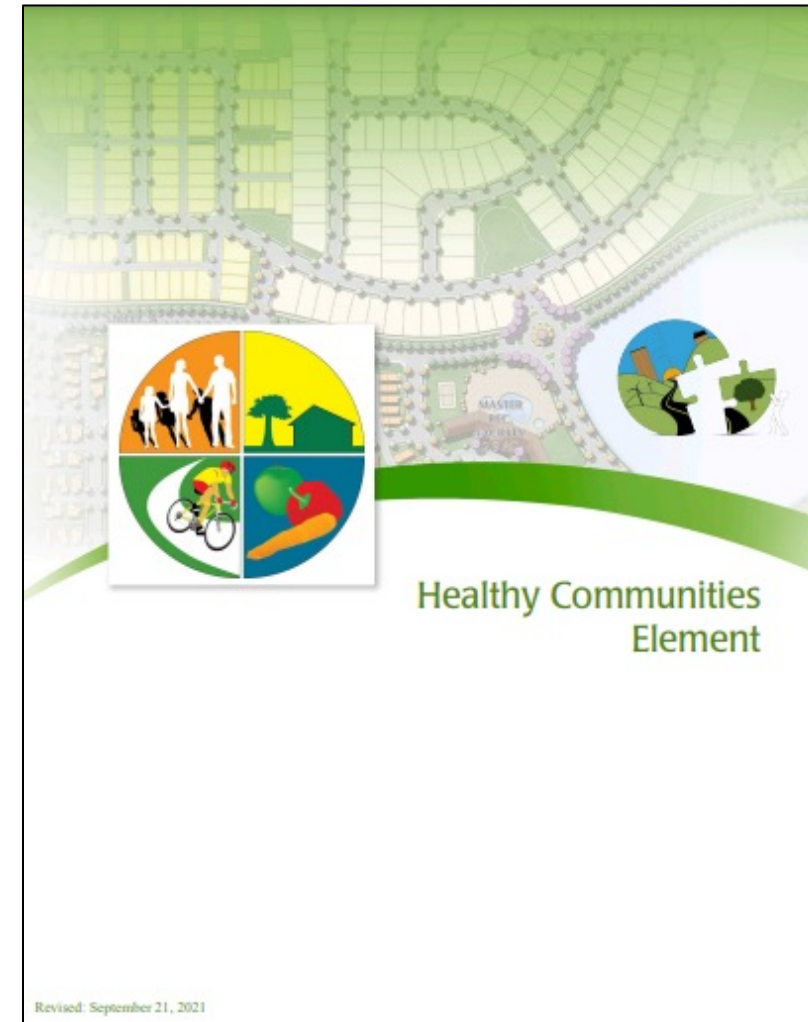


- Consistency with County-wide policy approach, to streamline transition of land use authority between March JPA and Riverside County
- Identify areas within the March JPA that are disproportionately impacted
- Framework for mitigating existing adverse conditions and ensure that new development does not unduly impact vulnerable populations

March JPA Land Use Authority



- March JPA's land use authority reverts back to the County on July 1, 2025, in accordance with 14th amendment to the March Joint Powers Agreement
- March JPA planning area will be recognized as territory within the County of Riverside and subject to the County Environmental Justice policies
- Maintain consistency with County Environmental Justice Goals and Policies found in the Healthy Communities Element.



Draft Environmental Justice Element



- Draft March JPA Environmental Justice Element based on Riverside Counties (approved by County 9/21/21).
- County EJ Policies: 77. March JPA EJ Policies: 77
- Asterisks implemented by Developers. Non asterisk items implemented by March JPA.

Project Schedule – Additional Participation



- November 2023: Draft Environmental Justice Element
- December 19, 2023: Draft Environmental Justice Element Workshop
- February 20, 2024: Draft Environmental Justice Workshop
- April 2024: Project Hearings

Tonight's Activity



- 1) Dot Poll regarding Draft Environmental Justice Provisions
- 2) Open Comments Session
- 3) Meeting Conclusion

Questions?



Contact Information:

Dan Fairbanks
Planning Director
March Joint Powers Authority
14205 Meridian Parkway, Suite 140
Riverside, CA 92518

Email: fairbanks@marchjpa.com

