

## Appendix E – Outreach

---

DRAFT

***PAC Meeting 1 Presentation***

DRAFT

# Project Advisory Committee (PAC) Meeting #1

Airport Master Plan  
March Inland Port Airport  
March 9, 2022 1:00pm



# Agenda

1. Project Advisory Committee (PAC) Introduction
2. Project Overview and Goals
3. Next Steps
4. Q&A



# Project Team

## March Inland Port Airport Authority (MIPAA)

**Gary Gosliga**, Airport Director

**Carlos Orellana**, Operations Manager

## Consultant Team

**Marc Champigny**, Project Manager, C&S Companies

**Jake Shurer**, Deputy Project Manager, C&S Companies

**Alexandra Davis**, Sustainability Lead, C&S Companies

**Drew Taplin**, Planning, C&S Companies

**Martinez Geospatial**, Airport GIS Sub-consultant



# Project Advisory Committee

- **Role**

- To provide technical oversight, guidance, and input into the planning process throughout the Airport Master Plan
- Up to five meetings



DRAFT

# Project Advisory Committee

## Agency Representatives

<b>Dr. Grace Martin</b>	MJPA, Executive Director
<b>Gary W. Gosliga</b>	MIPAA, Airport Director
<b>Dan Fairbanks</b>	MJPA, Planning Director
<b>Jeffery Smith</b>	MJPA, Senior Planner
<b>Carlos Orellana</b>	MIPAA, Airfield Operations Coordinator
<b>Charity Schiller</b>	MIPAA Legal, Environmental Attorney

## Other Stakeholders

<b>Jamil Dada</b>	Museum, President
<b>Greg Kuster</b>	Museum, Director of Operations
<b>Sammy Desopo</b>	Million Air, General Manager

## Riverside County Airport Land Use Commission (ALUC) Representative

<b>Simon A. Housman</b>	RIVCP ALUC, Project Director MARB MCUS
-------------------------	---

## MARB Representatives

<b>David Shaw</b>	452 <sup>nd</sup> , Base Civil Engineer
<b>Dave G. Palmer</b>	452 <sup>nd</sup> MSG, Chief, Environmental Flight
<b>Eric Lehto</b>	452 <sup>nd</sup> MSG, Environmental Engineer
<b>Robert Estrada</b>	AFCEC/CIBW, Former MARF AF Superfund Sites
<b>Bart Darnell</b>	MARB, Airfield Operations Manager

## FAA Representatives

<b>Darlene Williams</b>	FAA/LA ADO, Airport Planner/PFC Specialist
<b>Saba Khan</b>	FAA/LA ADO, CE/Program Manager

## Developer Parcel D-1 / Meridian Park D-1, LLC

<b>Timothy Reeves</b>	Developer D-1, Vice President
<b>Jeff Gordon</b>	Waypoint Ppty., Sr. Vice President
<b>Kathy Hoffer</b>	Hillwood, Vice President



# What is a Master Plan?

- **Blueprint for long-term development**
- **Typically includes:**
  - Visual representation of airport features, development, and land use
  - Schedule of proposed development and costs
  - Validation of concepts through technical, economic, and environmental grounds
  - A vision in coordination with the community





# Oversight

- **The Federal Aviation Administration (FAA) regulates airport development through master plans**
- **FAA reviews and formally approves:**
  - Forecast / Critical Aircraft
  - Airport Layout Plan (ALP)
- **Eligibility of Airport Improvement Program (AIP) funding for airports is tied to the elements above**



# Goals for Master Plan

- **Determine the extent, type, and schedule of development needed for the next 20 years**
- **To understand and document:**
  - Issues, opportunities, and constraints of the Airport
  - National and local aviation trends
  - Infrastructure needs and funding sources
  - Estimate of costs and schedules
- **Meet current FAA design standards, update ALP to reflect existing conditions, revise projections of airport activity, and meet environmental and other regulatory requirements**



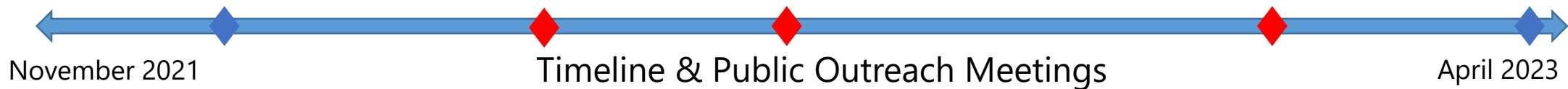
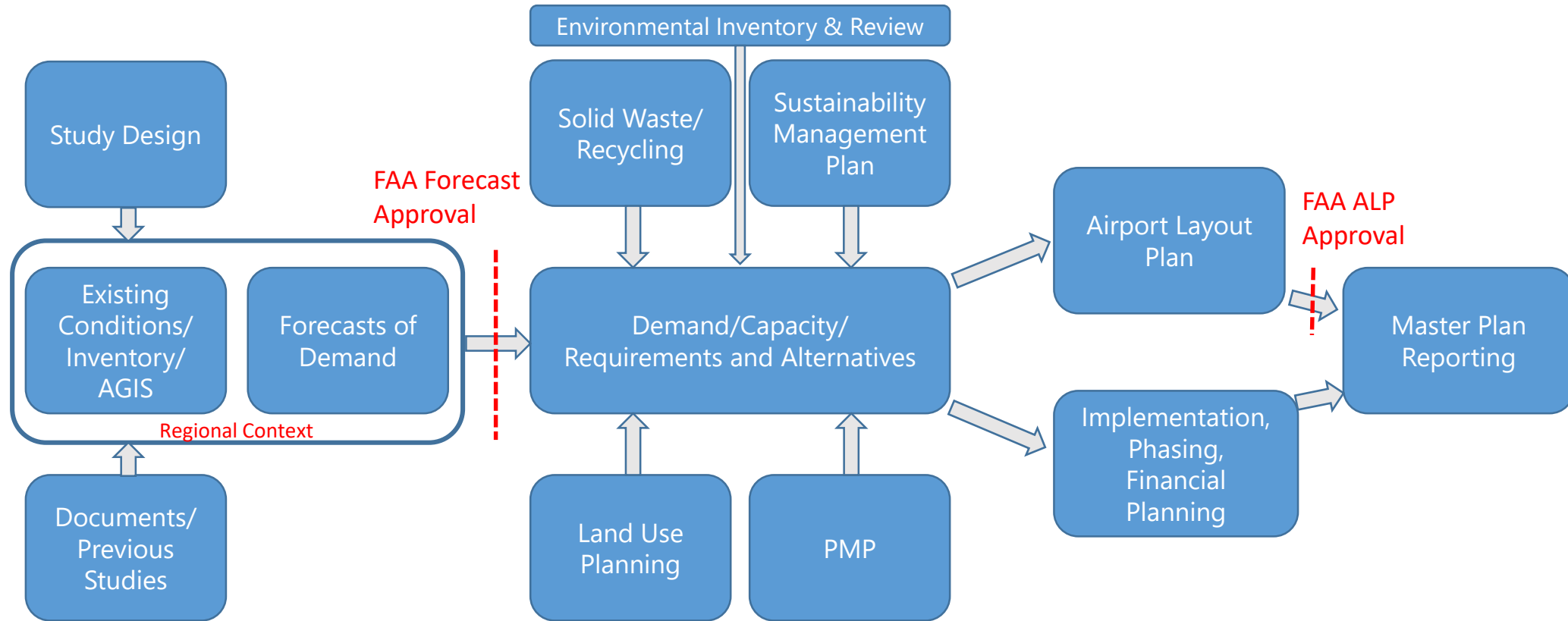
DRAFT

# PAC Feedback



DRAFT

# Process Flowchart/Schedule



DRAFT

# In-Progress

- Working Groups
- Existing Conditions & Inventory
- Regional Context & Land Use
- Forecast of Aviation Demand



DRAFT

# Working Groups

- **Stakeholder Involvement**
  - Planning Advisory Committee
  - Public Input



# Existing Conditions/Inventory

- **Assemble and organize relevant information and data pertaining to the Airport.**
- **AGIS & Aerial Survey**
- **Collect information for:**
  - Aviation system
  - Airfield
  - Terminal Area
  - Landside
  - GA & Support Facilities
  - Cargo Facilities



# Regional Context and Land Use

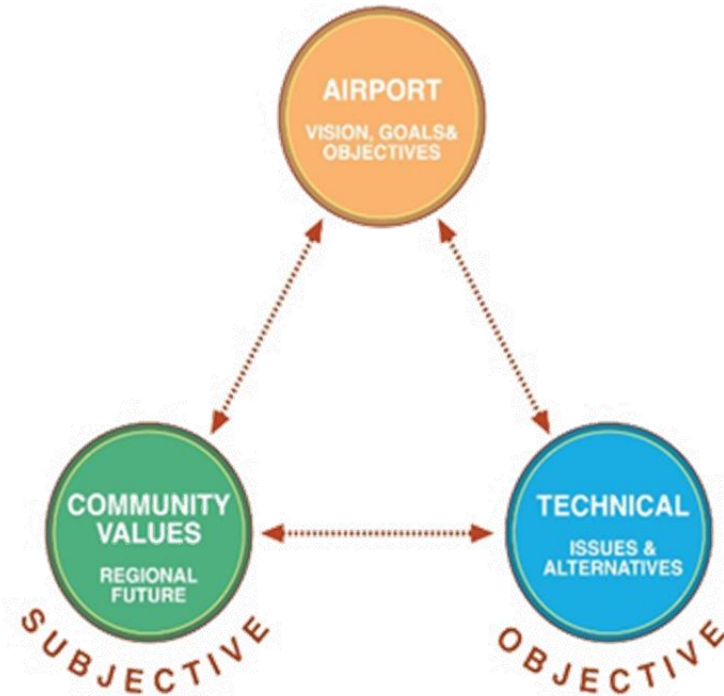
- **Vision & Goal Setting**

- Airport as an air service facility
- Relationship of Airport to transportation and communications network
- Airport's role in social and economic development

- **Regional Context and Land Use**

- Evaluate:
  - Regional growth
  - Airport competition
  - Existing and proposed land uses

- **Potential Airport name change?**





# Forecast of Aviation Demand



- **Develop aviation demand forecast for 5-, 10-, and 20-year planning horizon.**
- **Using historical data, estimates of aviation demand will include:**
  - Based aircraft totals and fleet mix
  - Annual operations by type of aircraft
  - Operational mix by type and Airport Reference Code
  - Critical/design aircraft
- **Will not forecast military activity**
- **JPA operations limited to 21,000/year**
- **2018 AICUZ Forecast = 52,172 operations**



DRAFT

# PAC Feedback



# Upcoming Elements

- Facility Requirements
- Environmental Review
- Solid Waste & Recycling Plan
- Sustainability Management Plan
- Land Use Planning
- Alternatives Development & Evaluation
- Implementation, Phasing & Funding
- Airport Layout Plan (ALP)



# Facility Requirements

- Determine the facility needs for the planning horizon.
- Based on demand, FAA design standards, capital maintenance needs, and the vision for RIV.
- Airside facilities
- Landside facilities
- Support facilities and infrastructure



# Environmental Review



- **Identify potential environmental factors that would need to be addressed as part of future airport environmental studies**
- **Examples:**
  - Noise Impacts
  - Water Quality
  - Endangered and Threatened Species
  - Air Quality
  - Light Emissions
  - Historic, Architectural, Archaeological, and Cultural Resources



# Solid Waste & Recycling Plan

- **Review current waste management/recycling practices**
- **Identify opportunities to:**
  - Minimize the generation of solid waste
  - Reduce operations & maintenance needs
  - Minimize cost
- **Recommend updated practices**



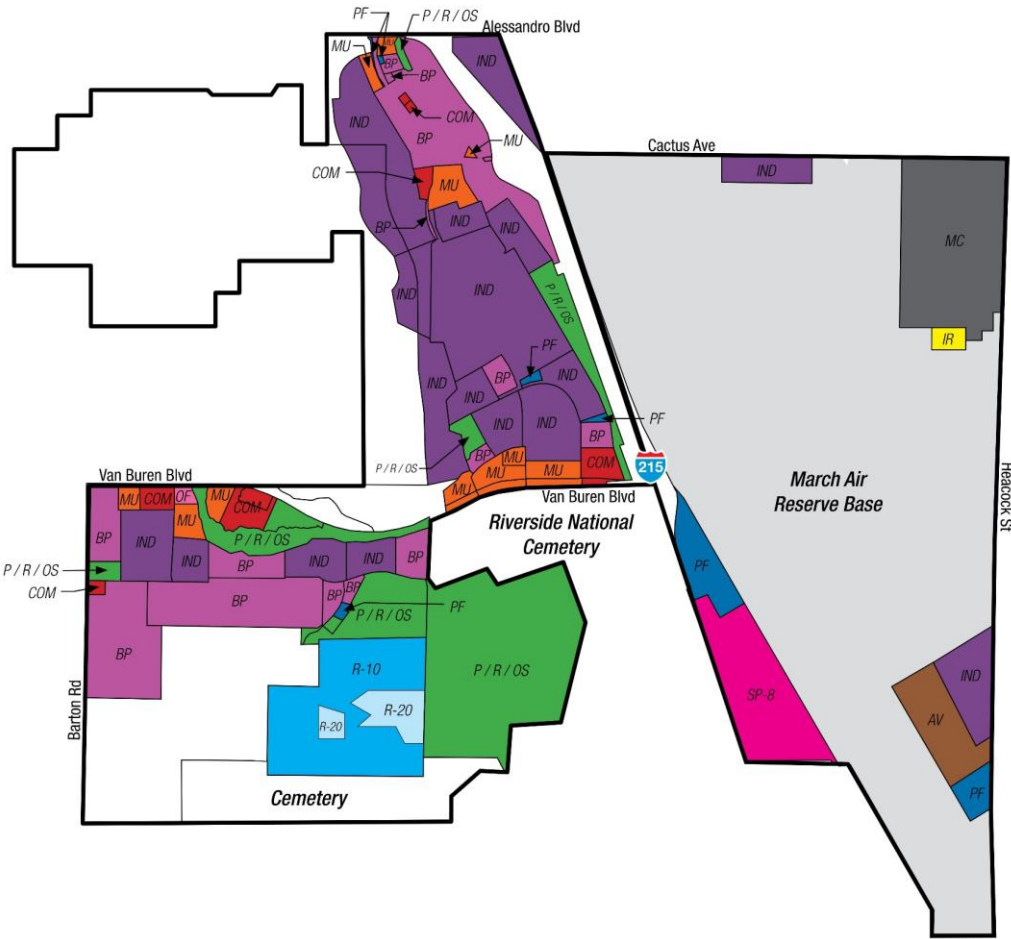
# Sustainability Management Plan

- **Economic Viability**
  - Minimized operations and cost
  - Local economy
  - Sustainable revenue
- **Operational Efficiency**
  - Optimize procedures
  - Resilience
  - Solid Waste & Recycling Plan
- **Natural Resource Conservation**
  - Air quality & water quality
  - Energy management
- **Social Responsibility**
  - Community & staff engagement
  - Local workforce



DRAFT

# Land Use Planning



- Inventory and assess current and future non-aeronautical land use at and surrounding RIV to support economic sustainability
- Interviews with community stakeholders
- Land use & market analysis
- Land use recommendation
- Riverside County ALUC being updated



# Alternatives Development & Evaluation

- **Prepare and evaluate concepts for Airport development to accommodate future requirements**
- **Up to three development alternatives**
- **Repurpose existing assets based on aviation demand**
  
- **Considerations:**
  - Design standards
  - Environmental impacts
  - Cost
  - Capacity
  - Operational efficiency



# Implementation, Phasing & Funding

- **Define individual development projects**
- **Develop the implementation schedule, cost estimates, and the Capital Improvement Program (CIP)**
- **Determine airport development schedule**
  - 5-year CIP (short-term development)
  - Intermediate & long-term development plan
- **Collect, organize, and analyze historical financial documents**
- **Identify funding sources for proposed projects**





DRAFT

# PAC Feedback



DRAFT

# Next Steps

- Master Plan working papers review
- Stakeholder interviews
- PAC Meeting #2 – Summer 2022



DRAFT

# Q&A

Element #	Element Name
Element 1	Study Design and Working Groups
Element 2	Regional Context
Element 3	Existing Conditions and Forecast
Element 4	Forecasts of Aviation Demand
Element 5	Demand/Capacity and Facility Requirements
Element 6	Land Use Planning
Element 7	Alternatives Development and Evaluation
Element 8	Environmental Inventory and Review
Element 9	Implementation and Phasing
Element 10	Financial Planning
Element 11	Master Plan Reporting
Element 12	Airport Layout Plan (ALP) Set
Element 13	Solid Waste/Recycling Plan
Element 14	Sustainability Management Plan
Element 15	AGIS & Aerial Survey
Element 16	Public Involvement Plan
Element 17	Project Administration



DRAFT

***PAC Meeting 2 Presentation***

DRAFT

# Project Advisory Committee (PAC) Meeting and Workshop

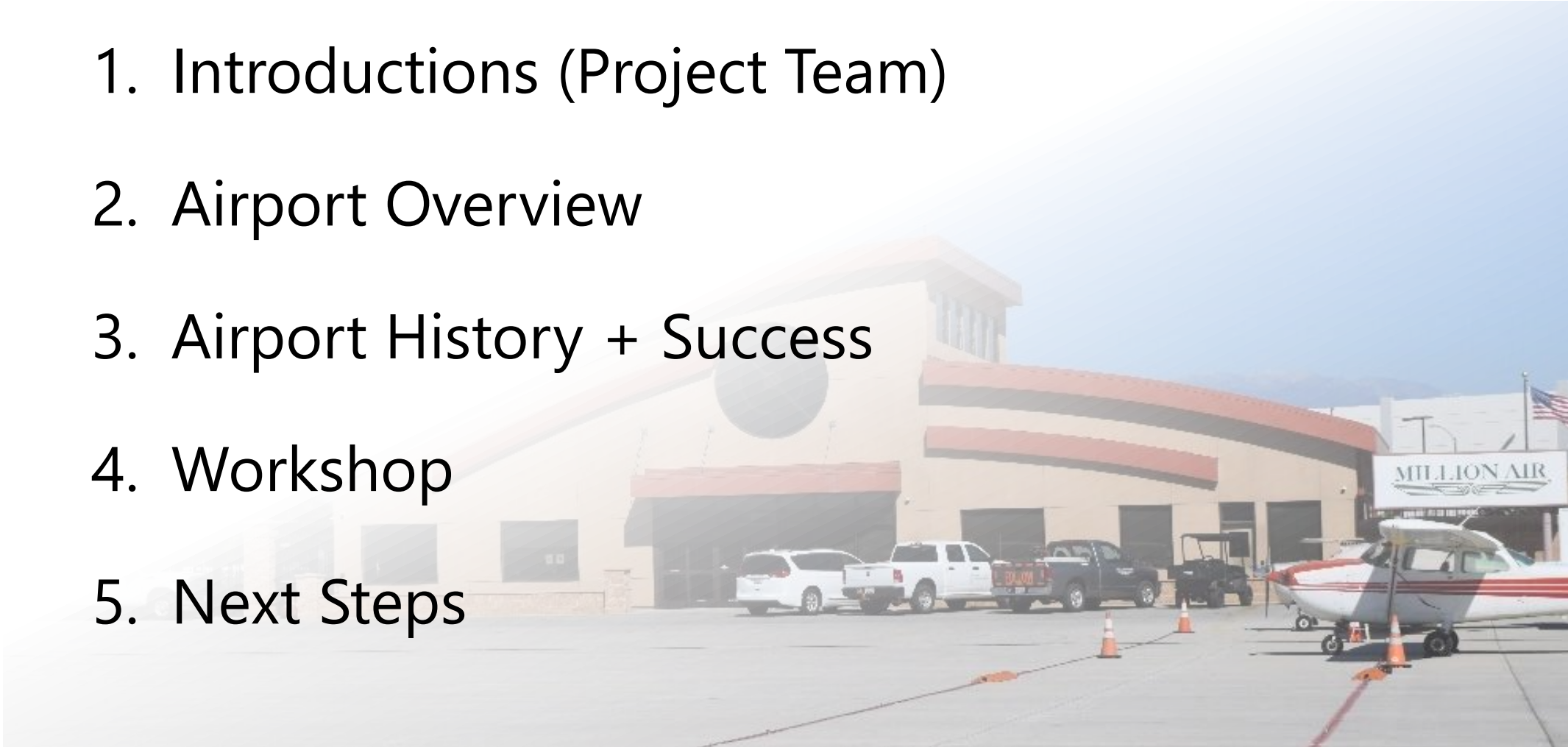
Airport Master Plan  
March Inland Port Airport  
February 2, 2023





# Agenda

1. Introductions (Project Team)
2. Airport Overview
3. Airport History + Success
4. Workshop
5. Next Steps



# Workshop Purpose

- Create a shared Vision by defining:
  - What the Airport is (now)?
  - Where is the Airport going (short- mid- long term)?
  - How will the Airport get there?
- Reimagine what Airport is to the community and its stakeholders
  - Development of a mission and vision



# Project Team

## March Joint Powers Authority

**Dr. Grace L. Martin**, Executive Director

**Rodney McCraine**, Deputy Director

**Gary Gosliga**, Airport Director, MIPAA

**Dan Fairbanks, AICP**, Planning Director

**Jeffrey M. Smith, AICP**, Principal Planner

**Lauren Sotelo**, Senior Planner

**Carlos Orellana**, Operations Manager, MIPAA

## Consultant Team

**Marc Champigny, Kelly Moulton, Jake Shurer, Mia Held**



DRAFT

# Introductions

- Name
- Organization
- What about the Airport do you want to learn more about today?



# DRAFT Airport History

**1918**

Alessandro Aviation Field selected as site for an aviation training facility. Renamed in honor of Peyton C. March.

**1942**

Active during WWII, the base doubled in area and supported 75,000 troops

**1966**

With two bomber squadrons and two air refueling squadrons, March supported the largest bomb wing in the Strategic Command

**1996**

MIPAA formed to create a public use airport

Purchased by the Federal government and became a permanent base

**1919**

U.S. Air Force established and Airport becomes March Air Force Base

**1947**

15th Air Force moves to Travis AFB. Through Base Realignment and Closure, March is redesignated as March Air Reserve Base and decreases in acreage.

**1993**



# Joint Use Agreement

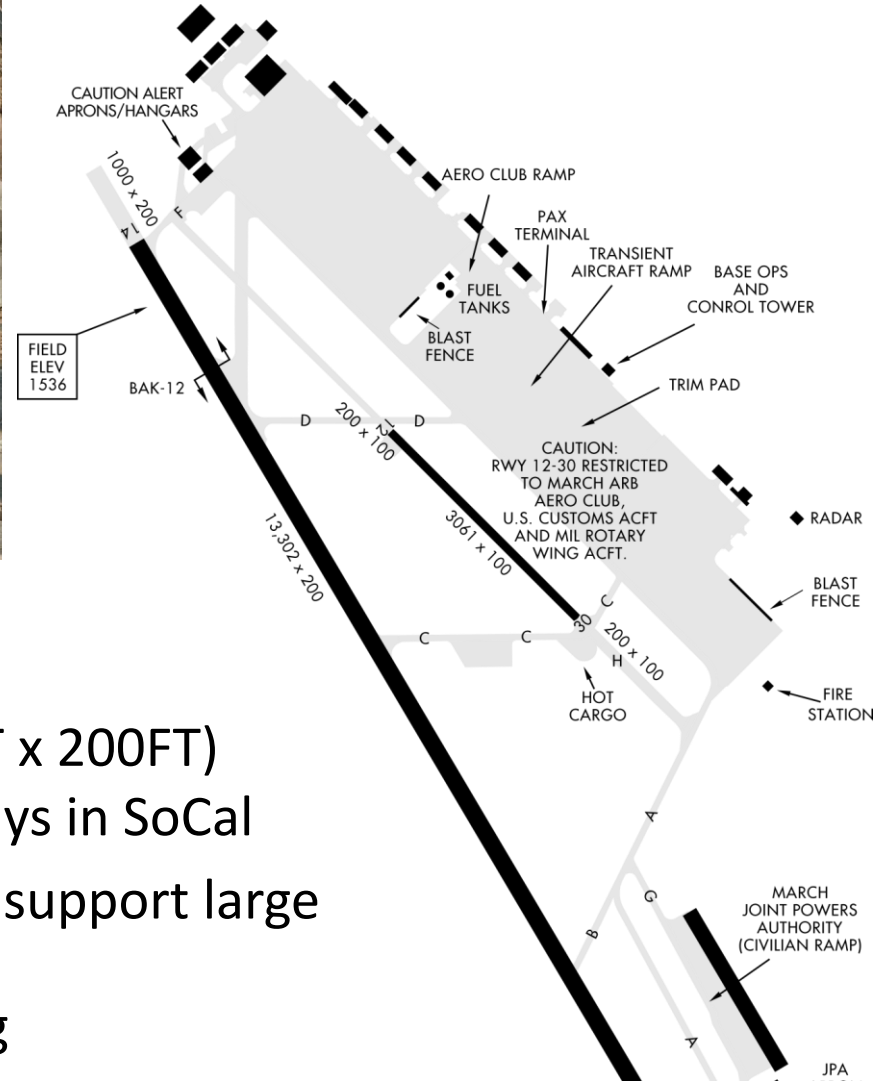
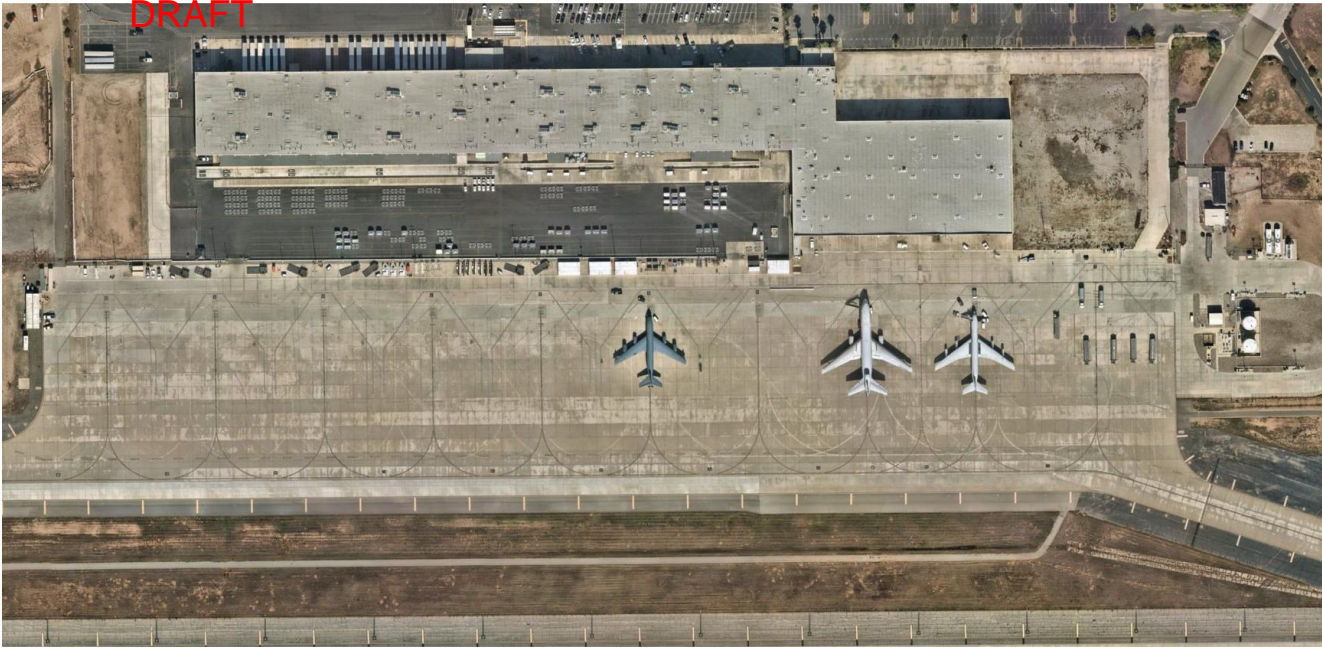
- The USAF owns and operates the facility
- March JPA and MIPAA manage and operate civil aviation
  - 21,000 annual operations limit
  - Military activity has priority
  - Flight schools are prohibited

- Forty year agreement
  - Signed
    - May 7, 1997
  - 1<sup>st</sup> Amendment
    - February 21, 2001
  - 2<sup>nd</sup> Amendment
    - June 20, 2008



DRAFT





# Notable Facilities + Features

- One Public-Use Runway
  - Runway 14/32 (13,302 FT x 200FT)
  - One of the longest runways in SoCal
- >1 Million SF of ramp area to support large aircraft operations
  - Cargo and aerial refueling
- Full service Fixed Base Operator
  - Million Air





DRAFT



# Airport Components



# What do we know about the Airport?

- How does the airport provide value to the community now?
- Do you see any real or perceived limitations of the airport?



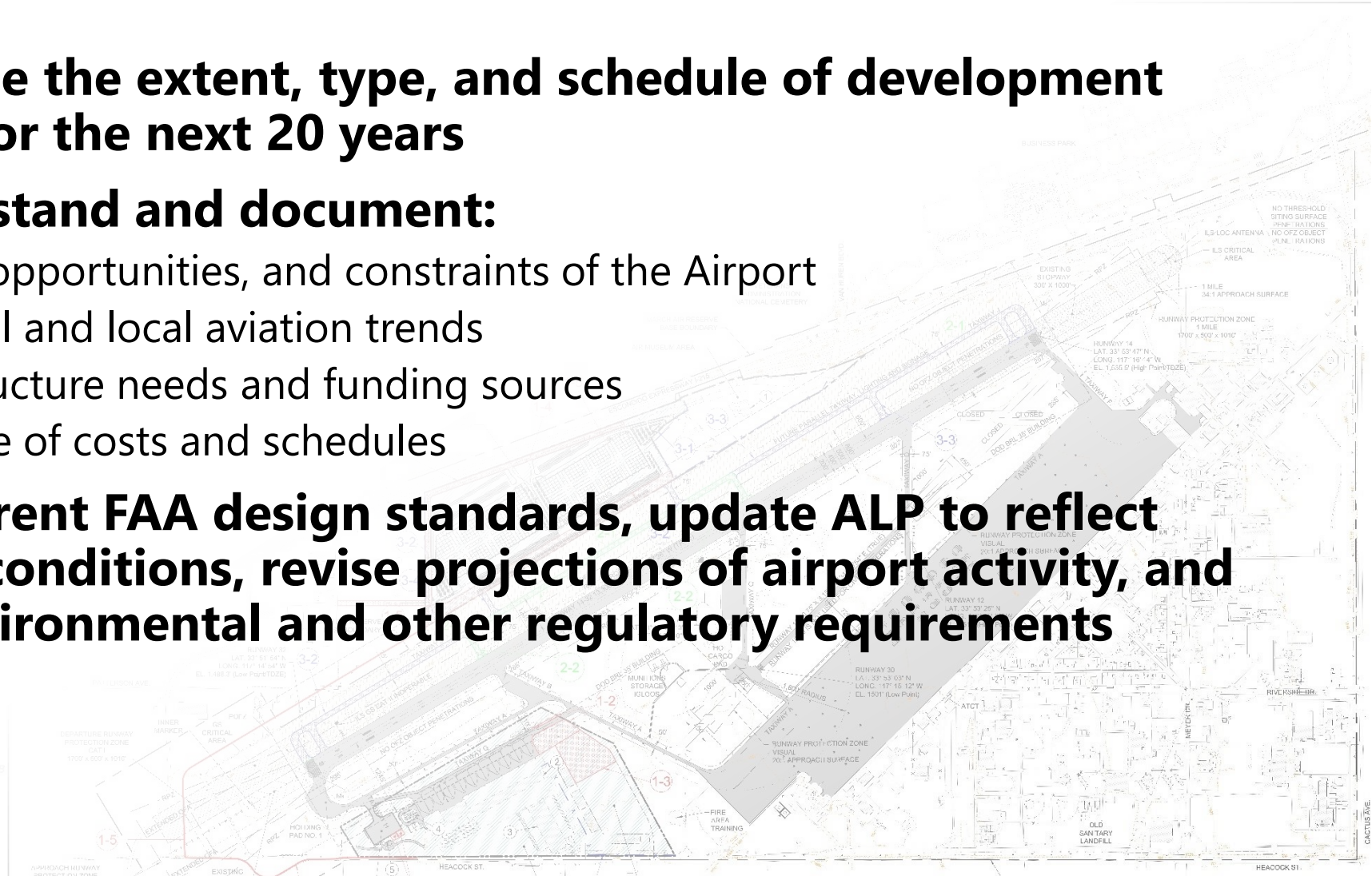
# What is a Master Plan?

- **Blueprint for long-term development**



# Master Plan Purpose

- **Determine the extent, type, and schedule of development needed for the next 20 years**
- **To understand and document:**
  - Issues, opportunities, and constraints of the Airport
  - National and local aviation trends
  - Infrastructure needs and funding sources
  - Estimate of costs and schedules
- **Meet current FAA design standards, update ALP to reflect existing conditions, revise projections of airport activity, and meet environmental and other regulatory requirements**



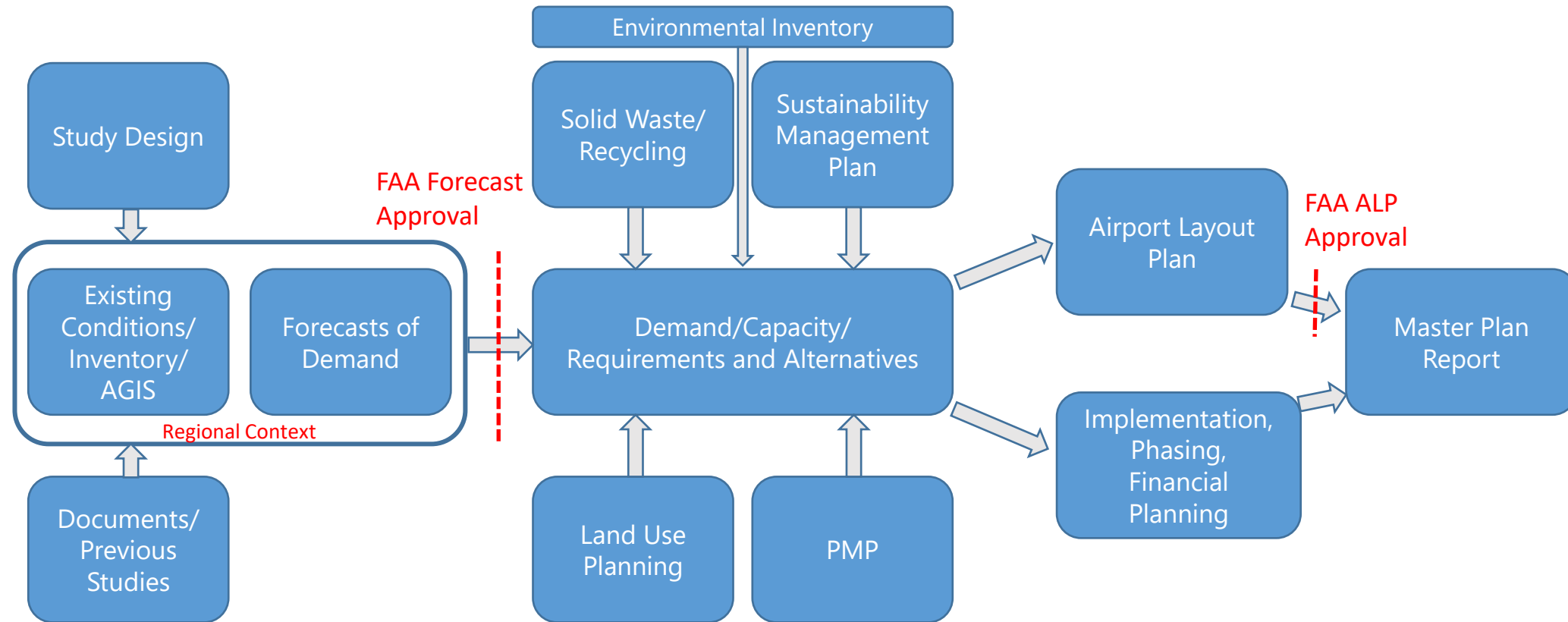
DRAFT

# What role do you play?

- Mission: “To **provide input and feedback** during preparation of the March Inland Port Airport Authority Master Plan, reviewing concepts and alternatives as they are developed and serving as a **representative voice of community and stakeholders.**”



# Process Flowchart/Schedule

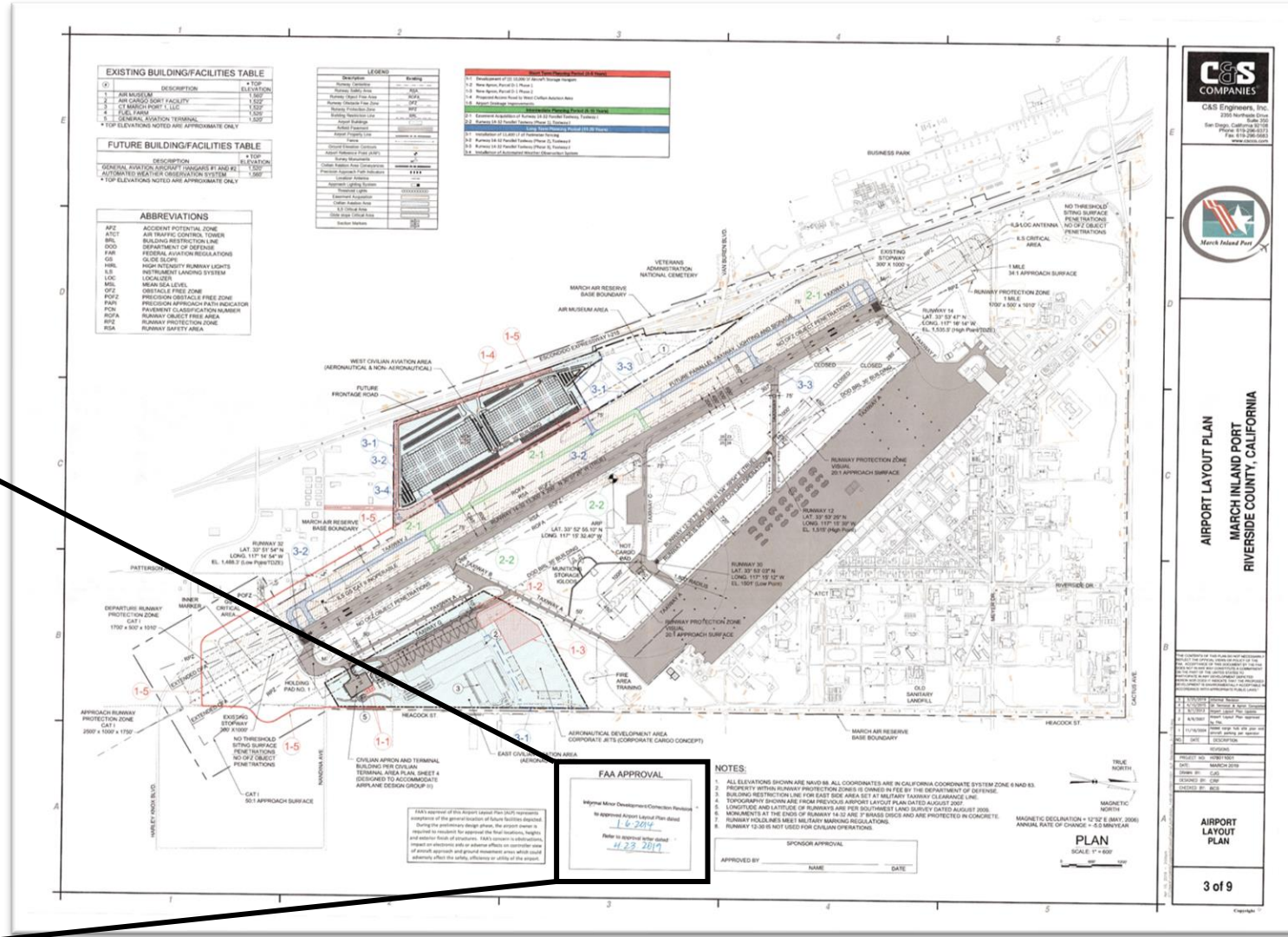


Timeline & Outreach Meetings



DRAFT

# Oversight and Approval



**FAA APPROVAL**

Informal Minor Development/Correction Revision  
to approved Airport Layout Plan dated  
1.6.2014

Refer to approval letter dated  
4.23.2019

**FAA APPROVAL**

Informal Minor Development/Correction Revision  
to approved Airport Layout Plan dated  
1.6.2014

Refer to approval letter dated  
4.23.2019



**AIRPORT LAYOUT PLAN**  
MARCH INLAND PORT  
RIVERSIDE COUNTY, CALIFORNIA

**REVISIONS**

NO.	DATE	DESCRIPTION
1	1.6.2014	APPROVED AIRPORT LAYOUT PLAN
2	4.23.2019	FAA APPROVAL

**AIRPORT LAYOUT PLAN**  
SCALE: 1" = 600'  
3 of 9

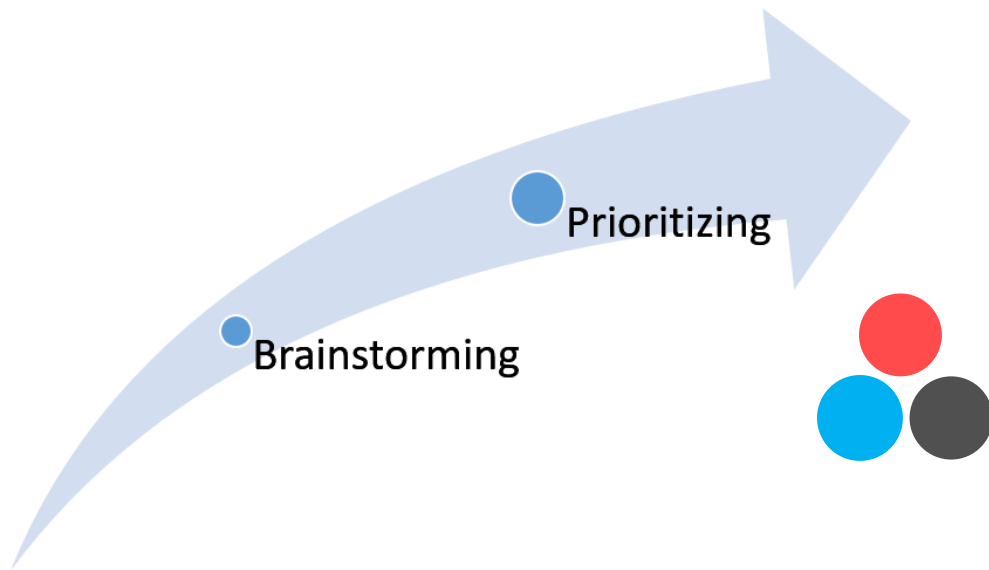


TIME FOR A  
*Break*

A simple line drawing of a coffee cup with a lid and a straw, positioned to the right of the word 'Break' in the main graphic.



# Idea Generation Process



## Ground Rules

- Discuss selected breakout question
- **~10-15 minutes, then review next question!**
- Groups will need a scribe and someone to report out to the larger group.
- **The whole group will vote** for the ideas and strategies that most resonate with them using dot stickers.

## Framework

Think about these 5 Airport Landscapes: Economic Vitality, Natural Resources Conservation, Operational Efficiency, Social Responsibility, Community Integration



# Breakout Session Questions

- 1. Where have you seen success so far at the Airport?**
- 2. What makes the Airport a leader/special?**
- 3. Where would you like to see the Airport in 5-10 years? (Think Big!)**
- 4. How can the airport provide value to the community in the future?**



# Where have you seen success so far at the Airport?



DRAFT

# Report Out



# What makes the Airport a leader/special?



DRAFT

# Report Out



TIME FOR A  
*Break*

A simple line drawing of a coffee cup with a lid and a straw, positioned to the right of the word 'Break'.

**Where would you like to  
see the Airport in 5-10  
years? (Think Big!)**





DRAFT

# Report Out



# How can the airport provide value to the community in the future?

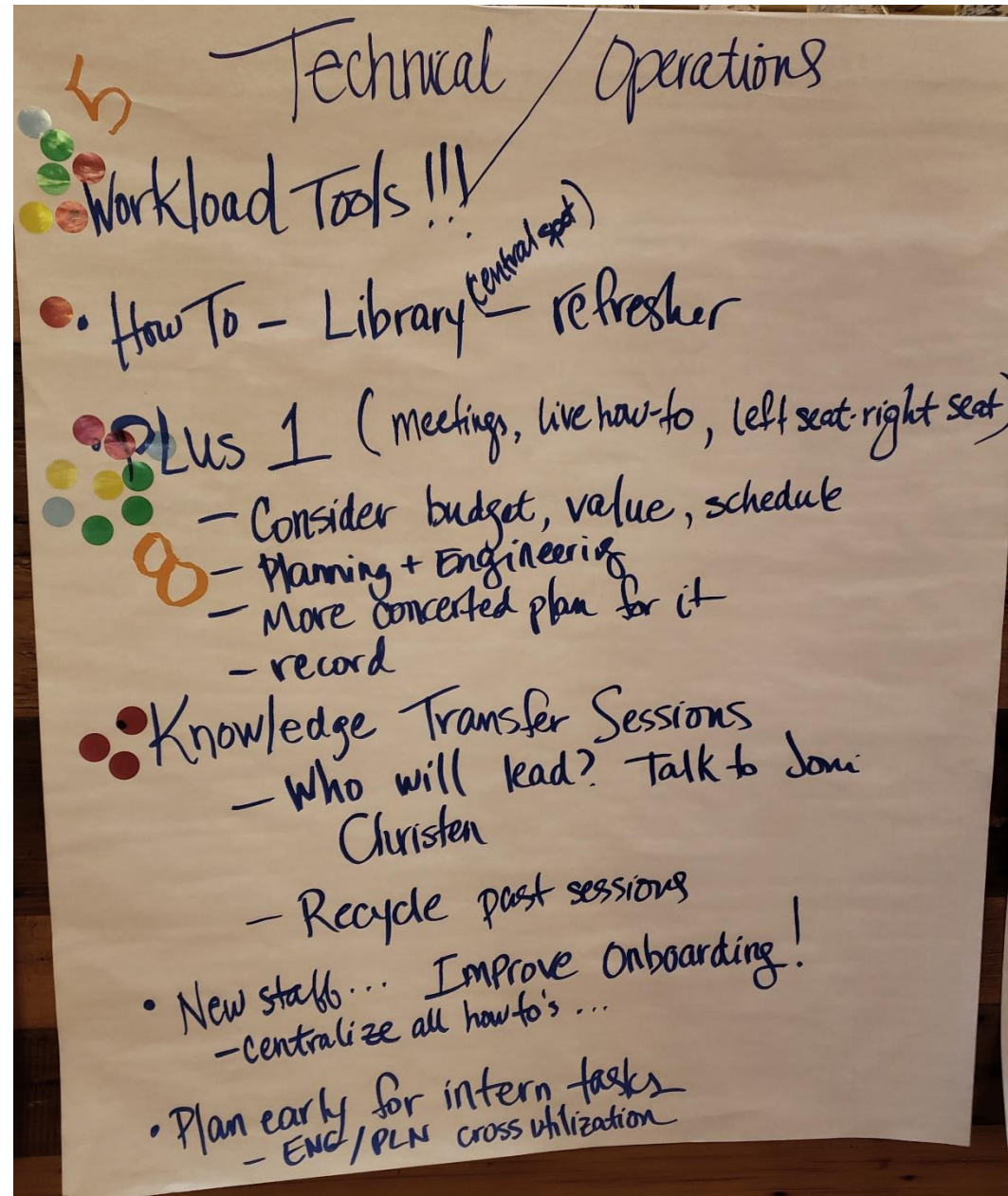


DRAFT

# Report Out



# Dot Polling



DRAFT

# Wrap Up

- Thank You!



DRAFT

***PAC Meeting 3 Presentation***

DRAFT

# Project Advisory Committee (PAC) Meeting

Airport Master Plan  
March Inland Port Airport  
July 26, 2023



# Agenda

1. Introductions (Project Team)
2. Master Plan Process and PAC Role
3. Facility Requirements
4. Preliminary Alternative Concepts
5. Next Steps





# Project Team

## March Joint Powers Authority

**Dr. Grace L. Martin**, Executive Director

**Gary Gosliga**, Airport Director, MIPAA

**Dan Fairbanks, AICP**, Planning Director

**Jeffrey M. Smith, AICP**, Principal Planner

**Lauren Sotelo**, Senior Planner

**Carlos Orellana**, Operations Manager, MIPAA

## Consultant Team

**Marc Champigny, Kelly Moulton**



DRAFT

# Introductions

- Name
- Organization
- What is important to you about this master plan process?



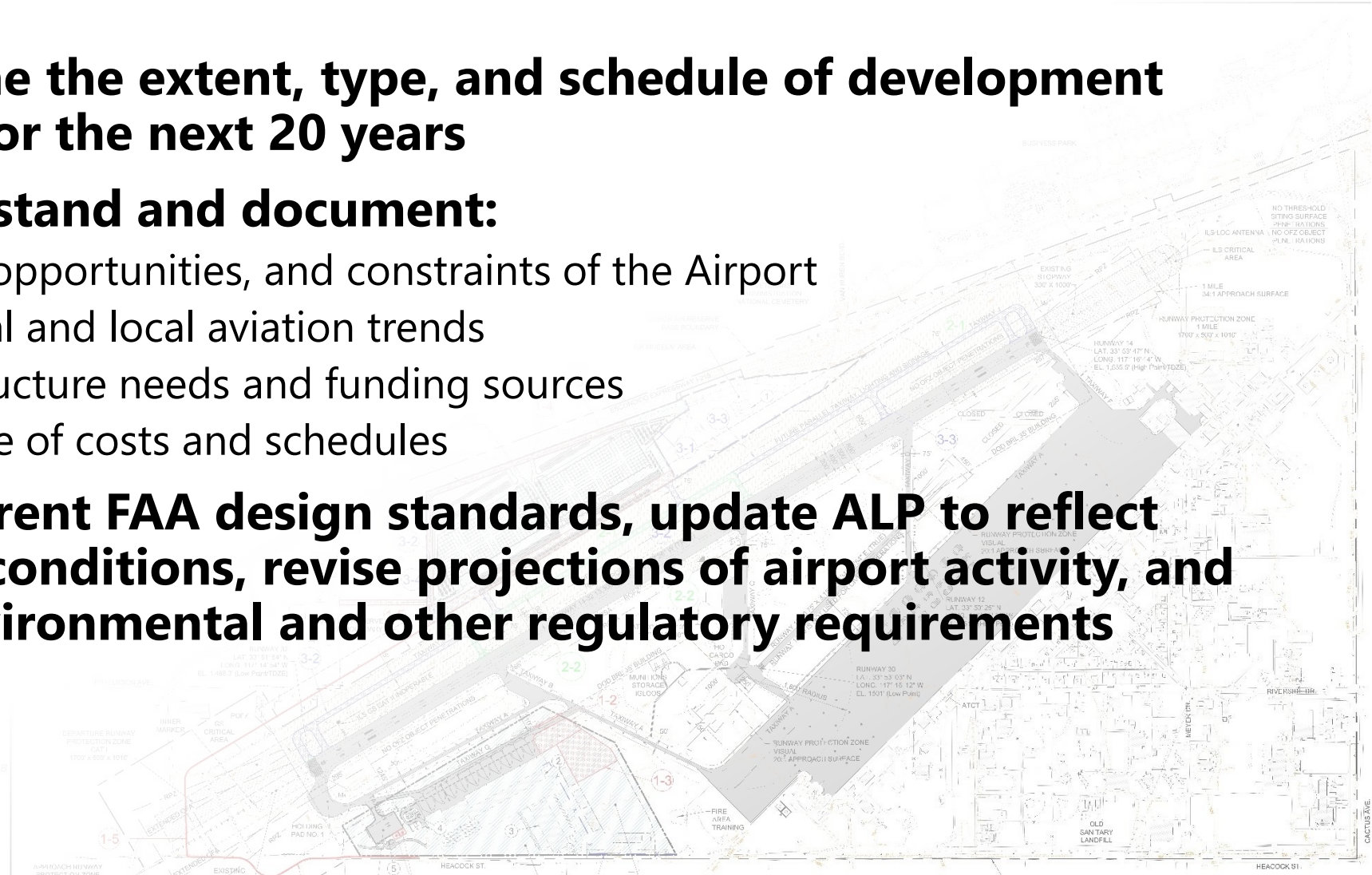
# What is a Master Plan?

- **Blueprint for long-term development**



# Master Plan Purpose

- **Determine the extent, type, and schedule of development needed for the next 20 years**
- **To understand and document:**
  - Issues, opportunities, and constraints of the Airport
  - National and local aviation trends
  - Infrastructure needs and funding sources
  - Estimate of costs and schedules
- **Meet current FAA design standards, update ALP to reflect existing conditions, revise projections of airport activity, and meet environmental and other regulatory requirements**



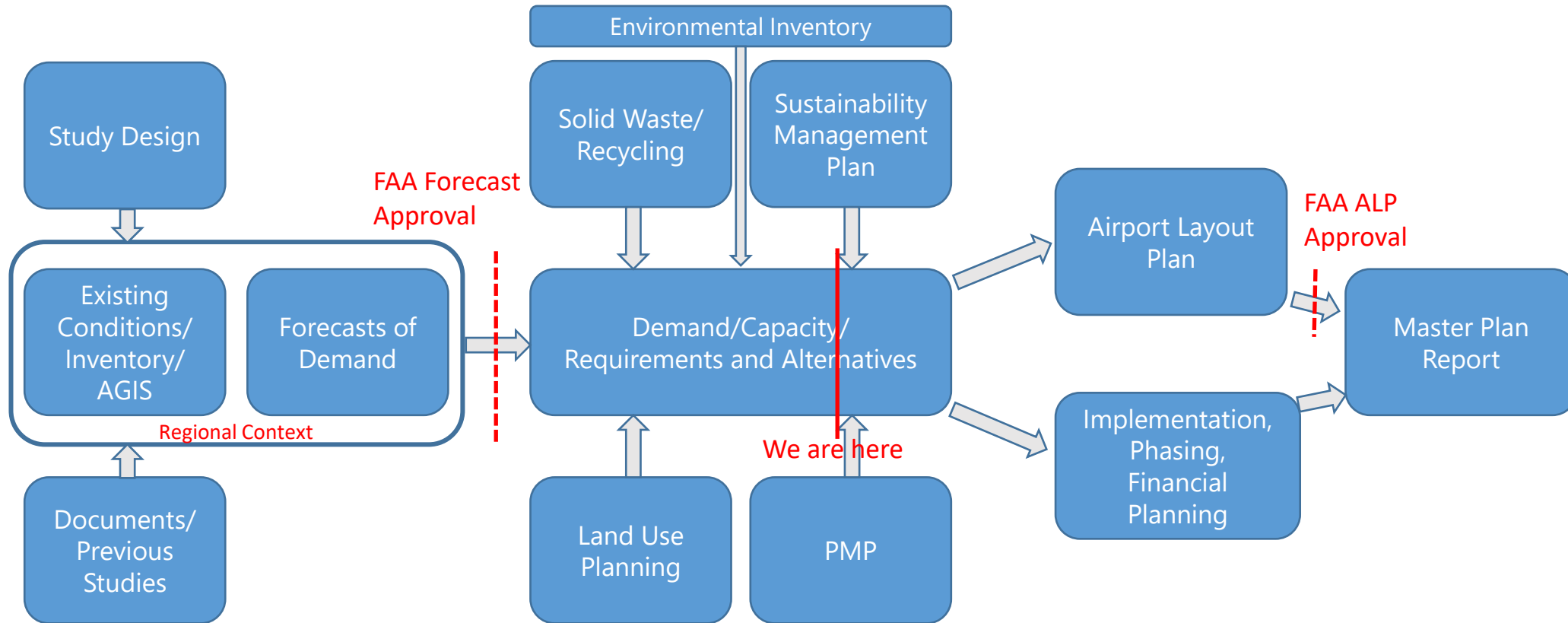
DRAFT

# What role do you play?

- Mission: “To **provide input and feedback** during preparation of the March Inland Port Airport Authority Master Plan, reviewing concepts and alternatives as they are developed and serving as a **representative voice of community and stakeholders.**”



# Process Flowchart/Schedule

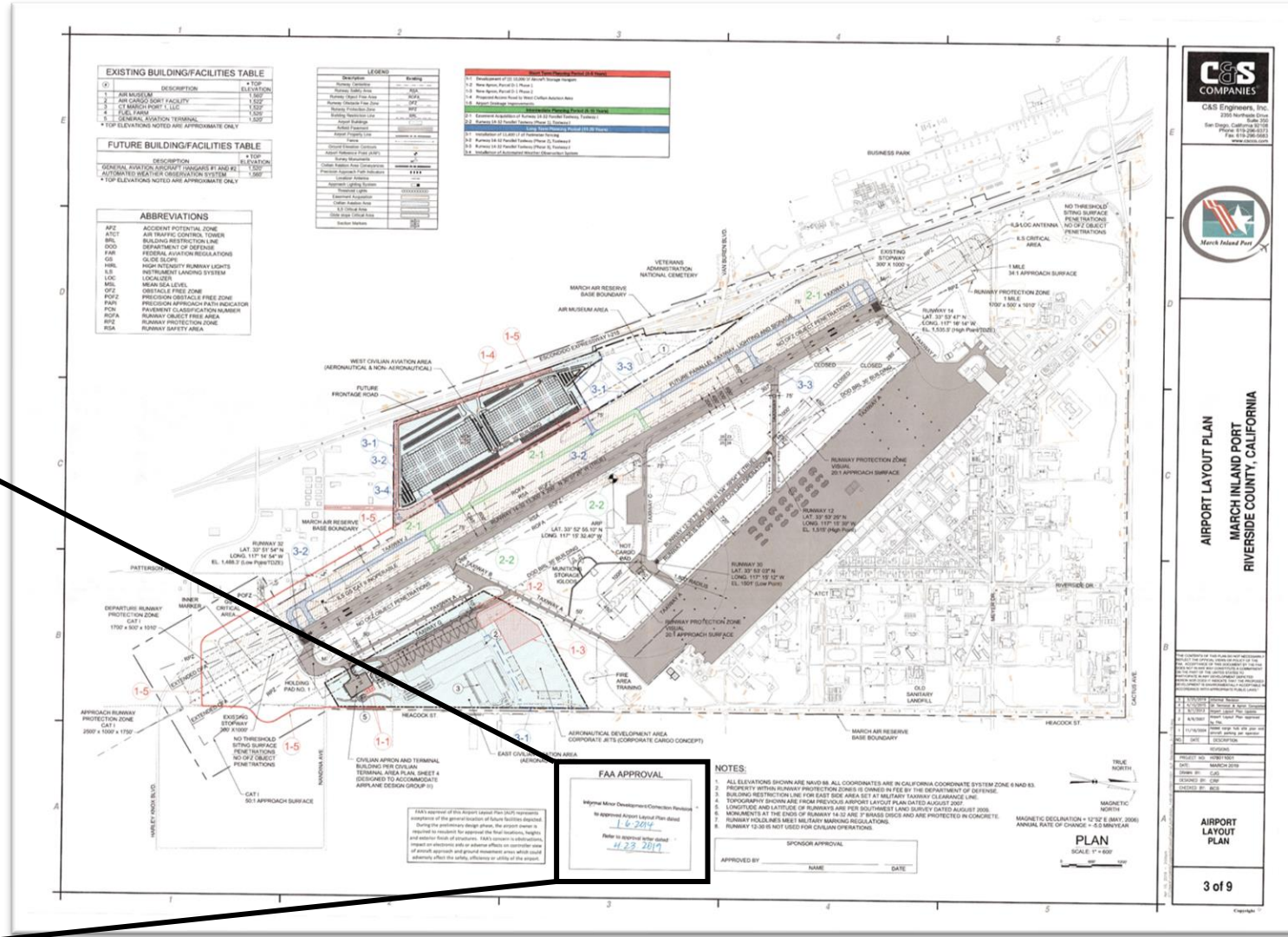


Timeline & Outreach Meetings



DRAFT

# Oversight and Approval



# Facility Requirements

- Determine the facility needs for the planning horizon.
- Based on demand, FAA design standards, capital maintenance needs, and the vision for RIV.
- Airside facilities
- Landside facilities
- Support facilities and infrastructure





# Airfield Requirements



Project	Description	Source
Weather Reporting	Install an ASOS	MJPA
Instrument Approach Procedures	CAT II ILS	MJPA
Taxiway Geometry	<p>Coordinate with military to address the following taxiway geometry issues:</p> <ul style="list-style-type: none"> <li>◆ Wide expanse at Runway 32 end</li> <li>◆ Wide expanse at Taxiway B and runway</li> <li>◆ Runway 14 and 32 end taxiways are not at 90 degrees</li> <li>◆ Middle three taxiways are not at 90 degrees</li> <li>◆ Poor guidance for holding bay markings</li> </ul>	FAA
TOFA	Maintain ADG V TOFA to protect for operations by large aircraft	FAA, MJPA
Parallel Taxiway	Construct a parallel taxiway to support operations on Runway 14/32	FAA, MJPA
Pavement Maintenance	Begin a pavement maintenance schedule to address the areas noted in the PMP	FAA, MJPA
Runway Protection Zones	Work towards removing incompatible land uses within the RPZs	FAA
Airfield Lighting	Install SMGCS to support operations in poor weather conditions	MJPA
Operations Limit	Explore increasing or removing the operations limit	PAC
Night Flight Constraints	Explore widening the window during which cargo flights occur	PAC



# Access, Circulation, Parking, Facility and Landside Requirements



Project	Description	Source
Cargo Apron	Expansion will be required in mid-term to accommodate increased cargo operations and air-refueling operations	FAA, MJPA
Cargo Building	The Marhub facility will require expansion in the mid-term and additional facilities will need to be created in the long-term planning period	FAA, MJPA
Executive Terminal	Currently out of space. Would accommodate current demand if the MIPAA offices moved to a new location	MJPA
General Aviation Apron	Expansion of this apron is being pursued. There is insufficient space to accommodate the corporate jet traffic as well as a desire to separate aircraft and helicopters.	MJPA
General Aviation Hangar Storage	Continue to reserve area for future general aviation hangar development	MJPA
Passenger Terminal Building	A 50,800 SF terminal building is required in the short-term and a 74,500 SF terminal building is required in the long-term to handle the potential passenger service. This was the second highest ranking item voted on in the PAC meeting.	MJPA, PAC
Drainage Improvements	Drainage improvements needed along Heacock St.	MJPA
Customs Facility	Explore the possibility of adding U.S. Customs at the airfield to support international flights	PAC
Gas Line Improvements	Existing gas lines are approximately 100 years old. Consider replacing existing lines	MJPA



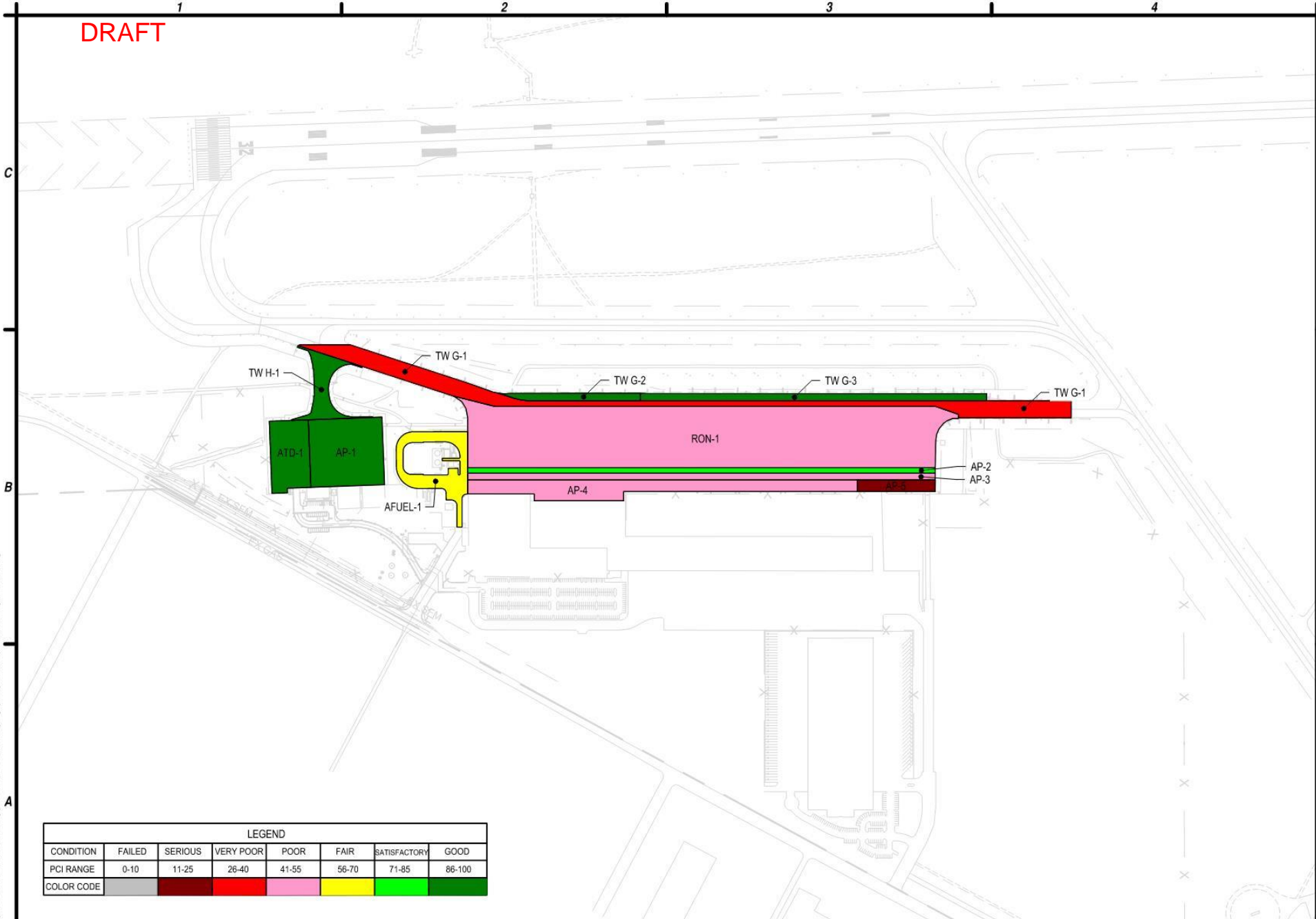
# Airport Support Facility Requirements



Project	Description	Source
MIPAA Offices	Potentially relocate MIPAA offices to a stand-alone facility	MJPA
Fuel Storage	Existing Jet-A storage capacity is well below current demand. Recommend expansion to increase capacity to 1,400,000 gallons.	MJPA
Airport Maintenance Yard	Construct an airport maintenance yard to store MIPAA vehicles	MJPA
Airport Name Change	Rebrand the airport to increase visibility in the area	PAC
West Side Development	Considered development on the west side of the airfield near the museum	PAC
Community Outreach	Increase community outreach to get local population excited about aviation. Open a vocational school and develop partnerships with existing programs to offer education, internships, and field trips.	PAC
Increase Market	Expand services to support other sectors of aviation	PAC
Sustainable Aviation Fuel	Offer SAF at airport	PAC
AAM and EVTOL	Prepare to support potential future operations of AAM and EVTOL aircraft	PAC
Aircraft Maintenance, Repair, and Overhaul (MRO) facility	Provide MRO services at the airport	PAC
Public Service Facilities	Attract public services such as CalFire, LEO, and Lifeflight to construct facilities at the airport	PAC
Utility Resiliency	Consider solar power or micro grid to increase resiliency of airport power	PAC



DRAFT



LEGEND							
CONDITION	FAILED	SERIOUS	VERY POOR	POOR	FAIR	SATISFACTORY	GOOD
PCI RANGE	0-10	11-25	26-40	41-55	56-70	71-85	86-100
COLOR CODE	Grey	Dark Red	Red	Pink	Yellow	Light Green	Dark Green



C&S Engineers, Inc.  
 2355 Northside Drive, Suite 350  
 San Diego, California 92108  
 Phone: 619-296-9373  
 www.ccsos.com



MARCH JOINT POWERS AUTHORITY  
 CIVILIAN AVIATION AREA  
 RIVERSIDE COUNTY, CALIFORNIA

MARK	DATE	DESCRIPTION
REVISIONS		
PROJECT NO:	H78.012.004	
DATE:	APRIL 2022	
DRAWN BY:	CM	
DESIGNED BY:	JC	
CHECKED BY:	BS	

2022 PCI MAP

FIGURE 1

Apr 08, 2022 - 10:45am  
 P:\Project\2022 - March Joint Powers Authority\2022\2022 - MJP and PCI\Design\CADD\Drawn\PCI Condition Map\_March\_2022.dwg

**A1** PCI CONDITION MAP - 2022 INSPECTION  
 SCALE: NOT TO SCALE



TIME FOR A  
*Break*

A simple line drawing of a coffee cup with a lid and a straw, positioned to the right of the word 'Break'.

# Alternatives Development & Evaluation

- **Prepare and evaluate concepts for Airport development to accommodate future requirements**
- **Consider development alternatives**
- **Repurpose existing assets based on aviation demand**
  
- **Considerations:**
  - Design standards
  - Environmental impacts
  - Cost
  - Capacity
  - Operational efficiency



DRAFT



# Figure X

## Terminal Area Development

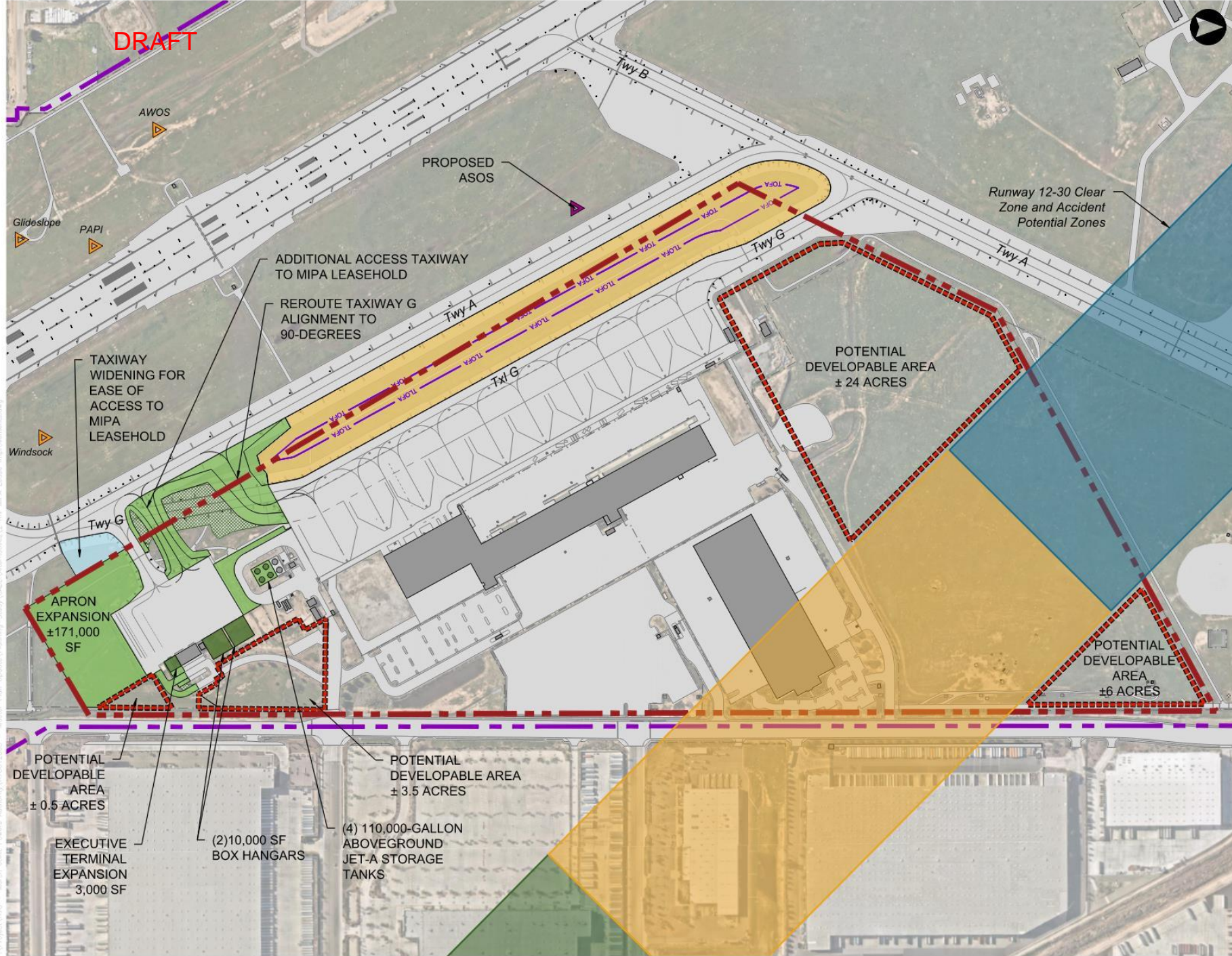
- Airport Property Line
- - - Civilian Aviation Area Conveyances
- Existing Buildings
- Existing Pavement
- Proposed Pavement - Phase 1
- Proposed Pavement - Phase 2
- Proposed Pavement - Phase 3
- Proposed Buildings
- Proposed Demolition
- Clear Zone - Class A
- Accident Potential Zone I - Class A
- Accident Potential Zone II - Class A
- Area Reserved for Future Aeronautical Development
- TOFA Taxway Object Free Area
- TLOFA Taxilane Object Free Area



### March Inland Port Airport Master Plan

Source: C&S Engineers, Inc., Aerial imagery provided by NearMap

**WORKING DRAFT**



04/06/2023 - 3:21pm  
C:\Projects\1928 - March Joint Powers Authority\1928012023 - Master Plan - Quarterly Planning Study\CAD\Aerial\040623\_1928\_Master\_Plan\_Improvements.dwg

DRAFT

Localizer



# Figure X Taxiway Geometry Improvements

- Airport Property Line
- Civilian Aviation Area Conveyances
- Existing Buildings
- Existing Pavement
- Proposed Pavement
- Proposed Demolition



## March Inland Port Airport Master Plan

Source: C&S Engineers, Inc., Aerial imagery provided by NearMap

**WORKING DRAFT**



04\_05\_2023 - 4:04pm  
P:\Project\1728 - March Joint Powers Authority\MFR012023 - Master Plan - Utility\Planning\Study\CAD\Drawings\X - Taxiway Geometry Improvements\1728



DRAFT



Figure X

Proposed West Side Parallel Taxiway



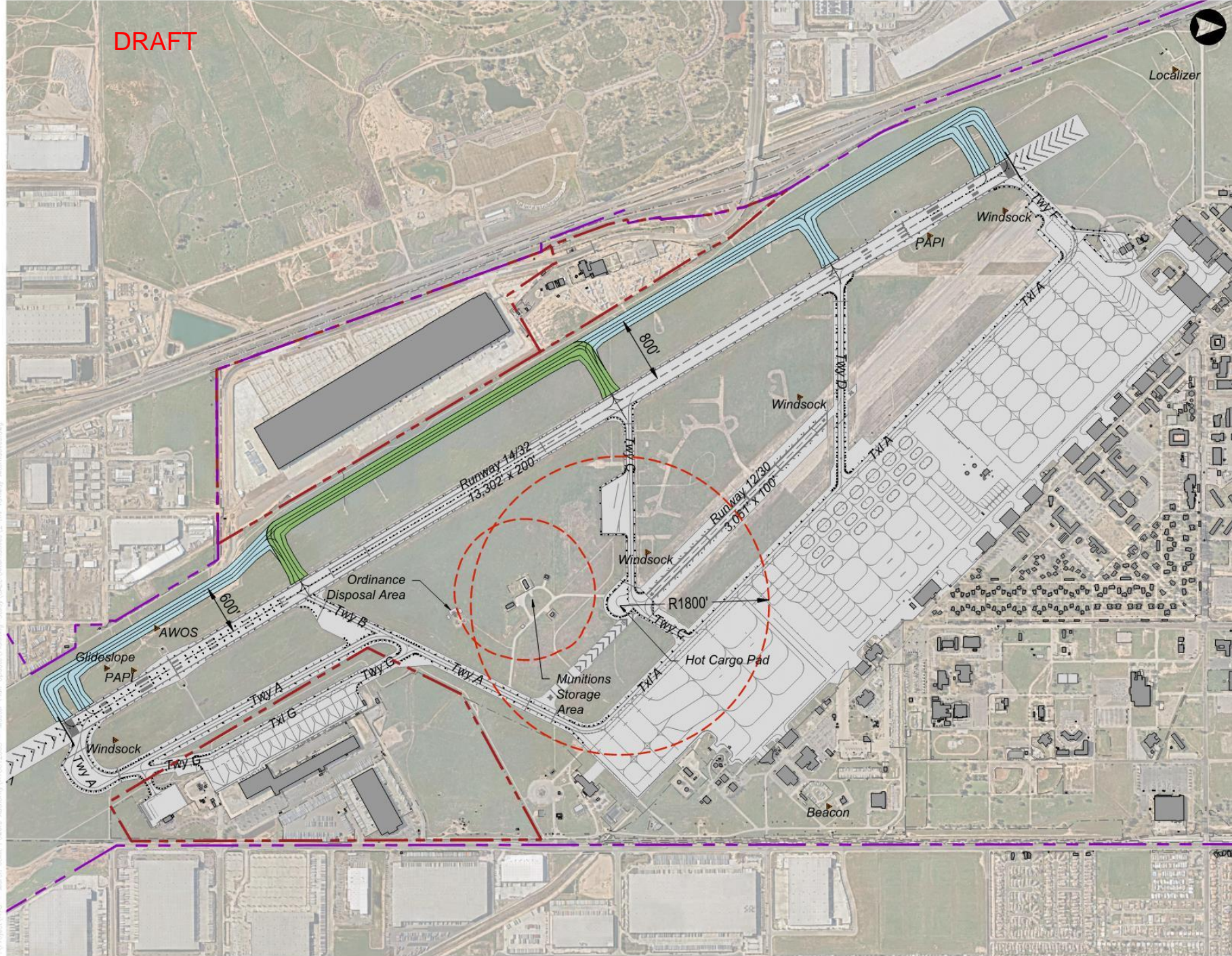
- Airport Property Line
- Civilian Aviation Area Conveyances
- Existing Buildings
- Existing Pavement
- Proposed Pavement - Phase 1
- Proposed Pavement - Phase 2
- Hazardous Cargo and Explosive Safety Clearances



March Inland Port Airport Master Plan

Source: C&S Engineers, Inc., Aerial imagery provided by NearMap

WORKING DRAFT

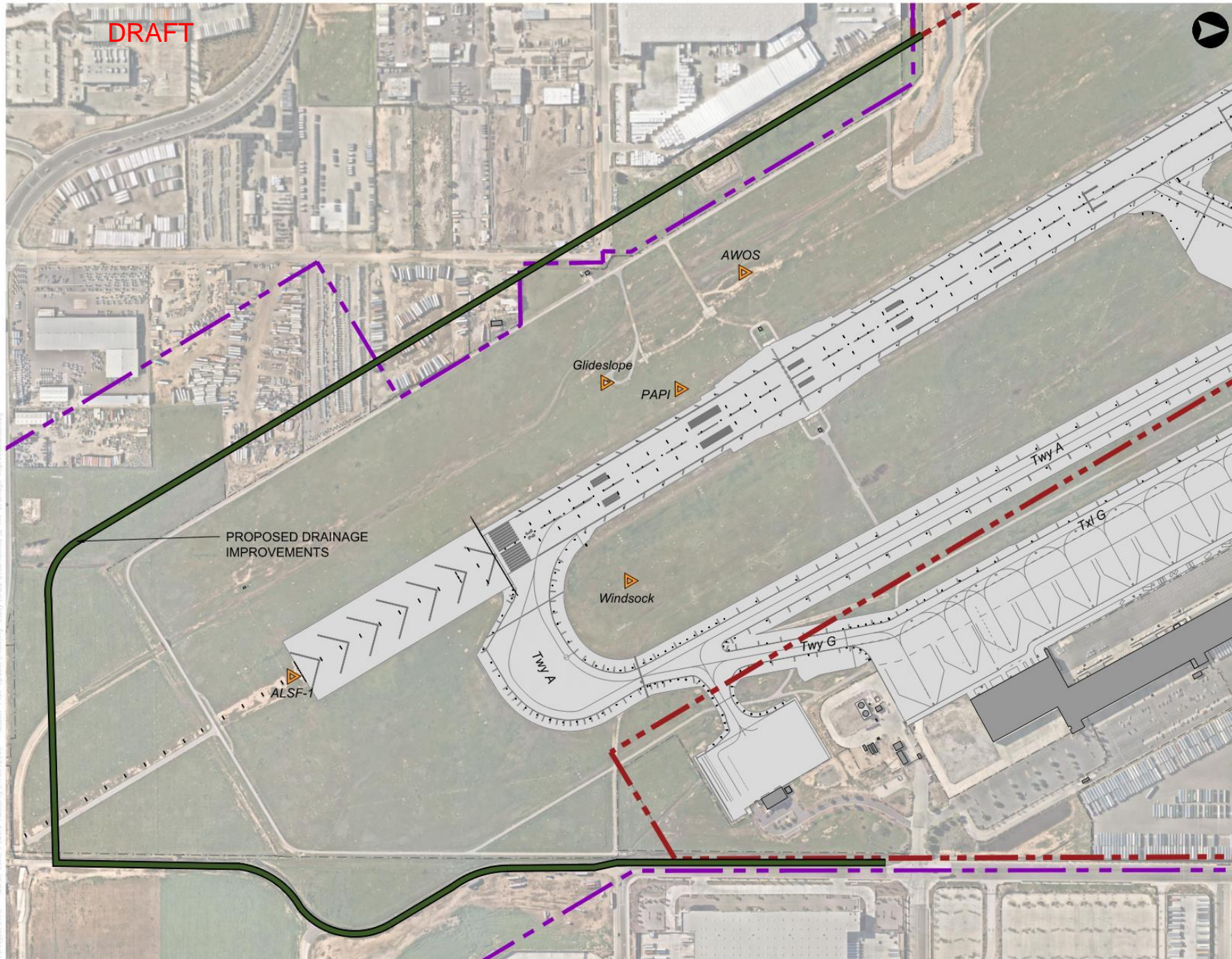


DRAFT



# Figure X Drainage Improvements

- Airport Property Line
- Civilian Aviation Area Conveyances
- Existing Buildings
- Existing Pavement
- Proposed Drainage Improvements



## March Inland Port Airport Master Plan

Source: C&S Engineers, Inc., Aerial imagery provided by NearMap

**WORKING DRAFT**



Jul 06, 2023 - 2:25pm  
 P:\Projects\1978 - March Joint Powers Authority\1978-01 Master Plan\1978-01 Planning\Study\AED\Map\Drawings\X - 804 Drainage Improvements.dwg

# Implementation, Phasing & Funding

- **Define individual development projects**
- **Develop the implementation schedule, cost estimates, and the Capital Improvement Program (CIP)**
- **Determine airport development schedule**
  - 5-year CIP (short-term development)
  - Intermediate & long-term development plan
- **Collect, organize, and analyze historical financial documents**
- **Identify funding sources for proposed projects**





What does RIV want to be known for in the next 5 – 10 years?



DRAFT



## RIVERSIDE REPORTER

Vol. 001

PAC Meeting #3

DATE: 26 July 2023

### A New Vision for RIV



## STEP 1: Visioning

**BREAKING HEADLINES**



- Activity- 10 Minutes to develop headlines to reflect the vision of the airport:
  - Imagine TEN years into the future at RIV...
    - How can you capture your plans and hopes for the airport in a headline?
    - What kinds of headlines do you hope to see about the airport in the future?
    - What are your priorities at RIV?
    - What are the community's priorities?
    - What makes RIV unlike any other airport in the world?
    - How can RIV best serve its users?



DRAFT



MARCH JOINT POWERS AUTHORITY  
"BRINGING GOOD JOBS TO RIVERSIDE COUNTY"

# RIVERSIDE REPORTER

Vol. 001

PAC Meeting #3

DATE: 26 July 2023

## A New Vision for RIV



Which headline most resonates?





01.

04.



03.

02.



05.

## STEP 2: Visioning- Priorities

- Goals
  - What are 5 goals that will help move RIV towards achieving that headline?
  - What do you want the STORY OF RIV to look like in the future?



DRAFT

# Next Steps

- Continue development of plan
- Prepare draft airport master plan report
- Prepare draft airport layout plan set
- PAC Meeting #4 – TBD
- Goal is to complete by December 2023





DRAFT

# ***Community Meeting Boards***

DRAFT



# Welcome!

**Community Meeting  
March Inland Port Airport  
September 7, 2023**

**Be sure to sign in and  
take a comment card**



# March Inland Port Airport

- Civil operations limited to 21,000/year
- Flight training is prohibited as a part of the joint use agreement



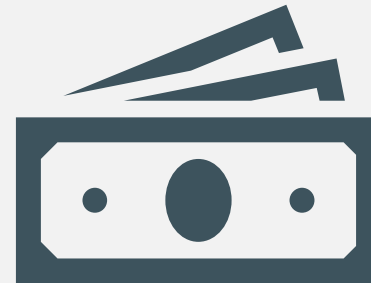


# Draft Economic Impact Study

## Current Development in March JPA and March ARB in 2023



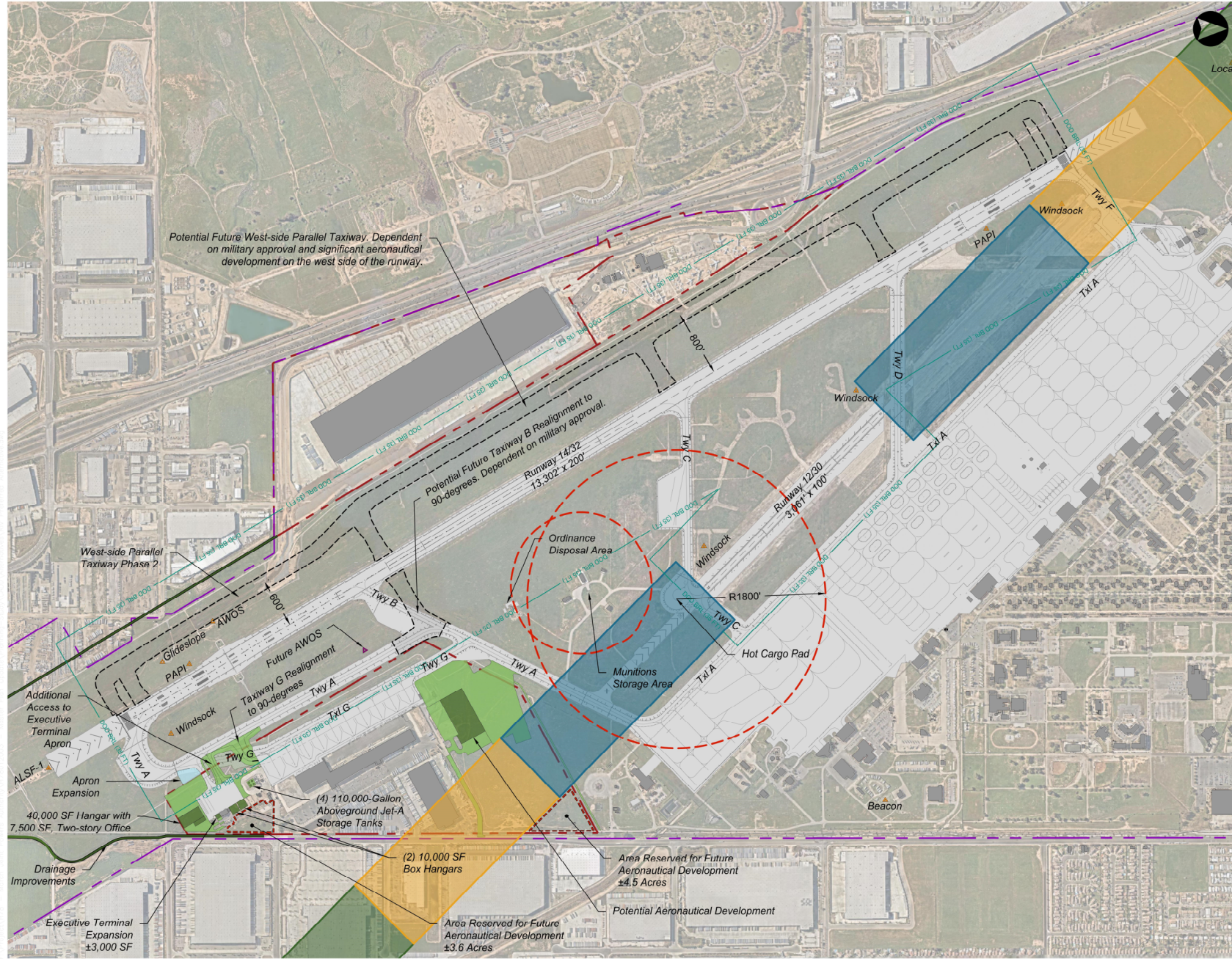
**41,311**  
**Jobs Created**



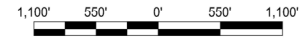
**\$10.14**  
**Billion Economic Impact**



**Figure X**  
Preferred Development Alternative



- Airport Property Line
- Civilian Aviation Area Conveyances
- Existing Buildings
- Existing Pavement
- Proposed Pavement - Phase 1
- Proposed Building - Phase 1
- Proposed Pavement - Phase 2
- Hazardous Cargo and Explosive Safety Clearances
- Clear Zone - Class A
- Accident Potential Zone I - Class A
- Accident Potential Zone II - Class A
- Department of Defense Building Restriction Line (35 FT)



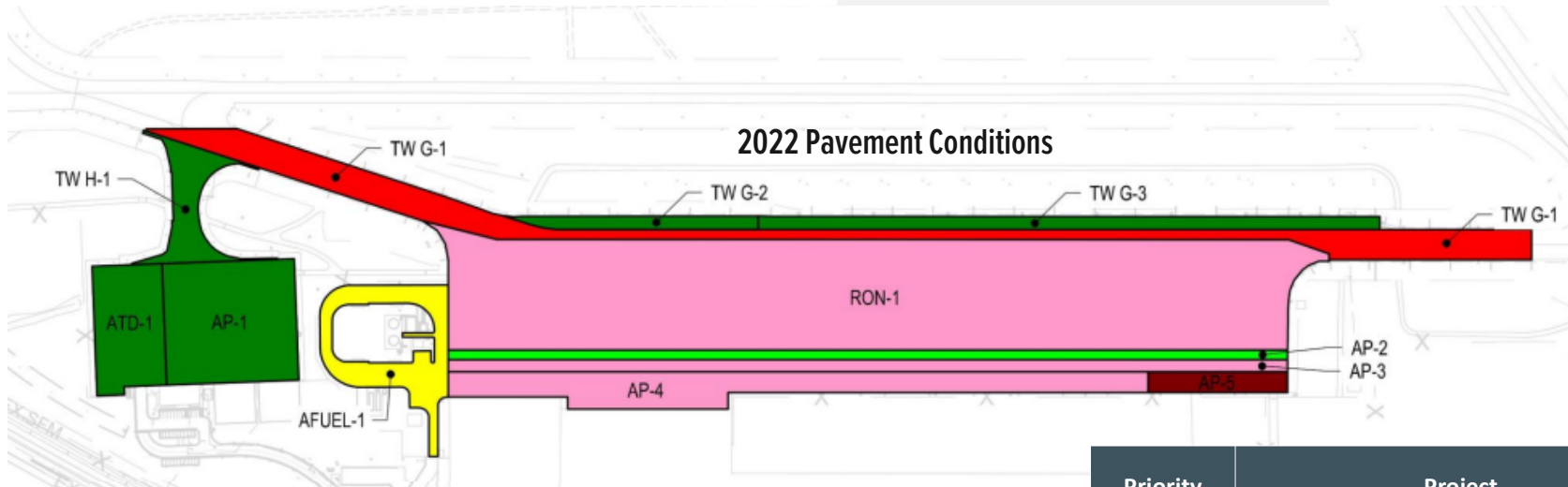
March Inland Port Airport Master Plan

Source: C&S Engineers, Inc., Aerial imagery provided by NearMap

**WORKING DRAFT**

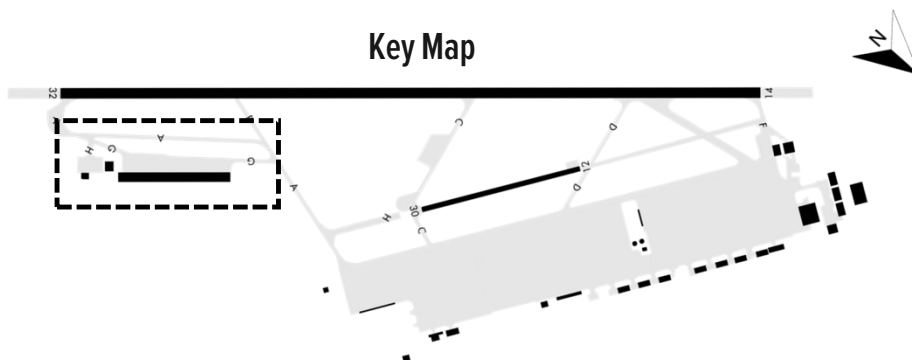


# Pavement Management Plan



Legend							
Condition	Failed	Serious	Very Poor	Poor	Fair	Satisfactory	Good
PCI Range	0-10	11-12	26-40	41-55	56-70	71-85	86-100
Color Code	Grey	Dark Red	Red	Pink	Yellow	Light Green	Dark Green

Priority	Project	Construction Year
1	AP-5 Routing and Cracking	2023
2	Phase 1 Taxiway G Reconstruction	2025
3	AFUEL-1 Routing and Cracking	2024
4	Phase 2 Taxiway G Reconstruction	2026
5	Phase 3 Taxiway G Reconstruction	2027
6	Phase 4 Taxiway G Reconstruction	2028
7	Phase 5 Taxiway G Reconstruction	2029
8	Phase 6 RON-1 Reconstruction	2030
9	Phase 7 RON-1 Reconstruction	2031
10	Phase 8 RON-1 Reconstruction	2032
11	Phase 9 RON-1 Reconstruction	2033
12	Phase 10 RON-1 Reconstruction	2034



# Thank you for attending!

**Don't forget to leave your  
completed comment card**



DRAFT

***Community Meeting Notice***





March Inland Port Airport Authority

# Community Meeting



Sept 7, 2023



5:00 - 7:00 PM

14205 Meridian Parkway, Riverside, CA 92518 (WMWD Training Room, Suite 120)

Join us to learn more about the March Inland Port Airport. Learn about the civilian operation of the airport, its economic impact to the region and the long range plans.

<https://marchjpa.com/march-inland-port-airport/>