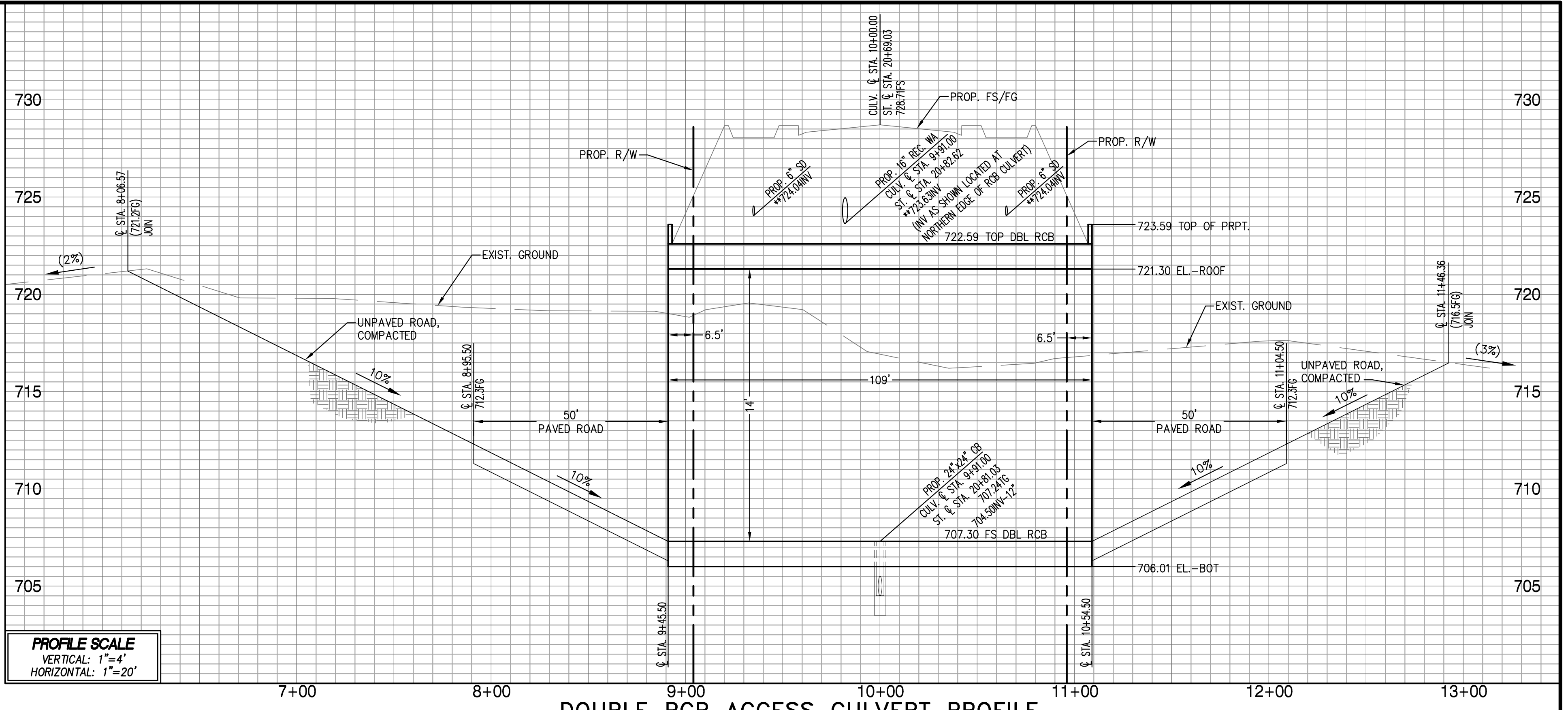
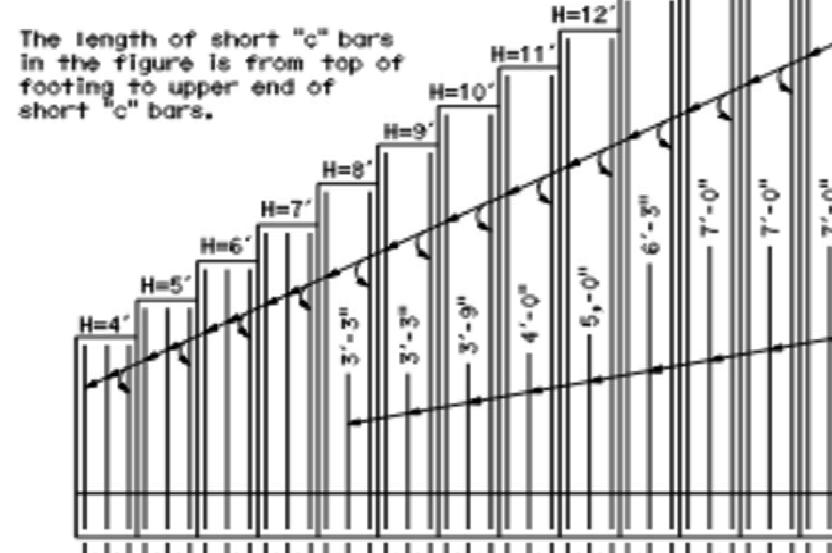
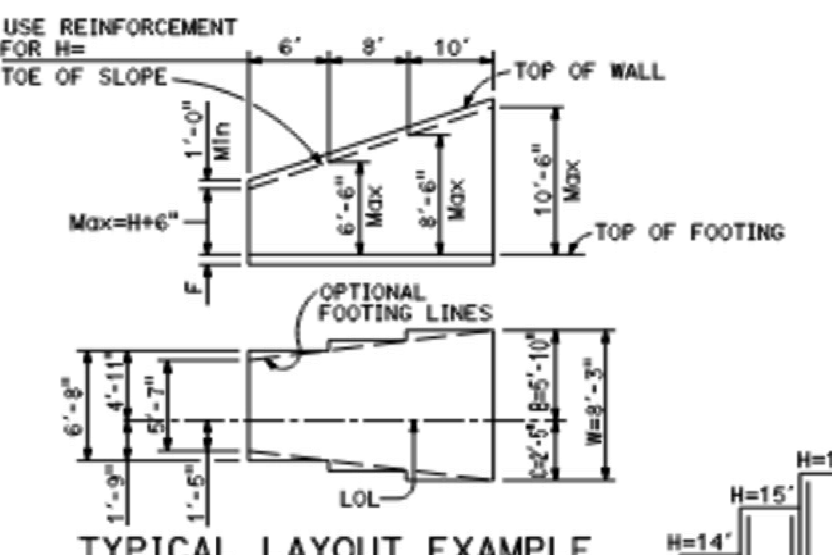


DOUBLE RCB ACCESS CULVERT PLAN

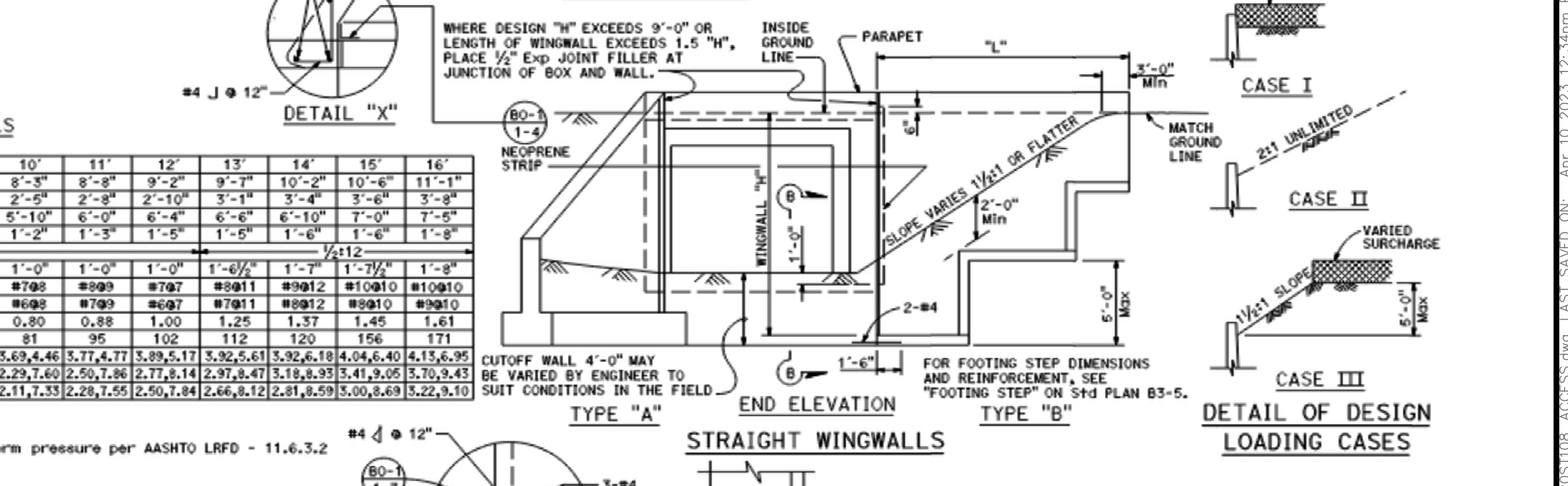
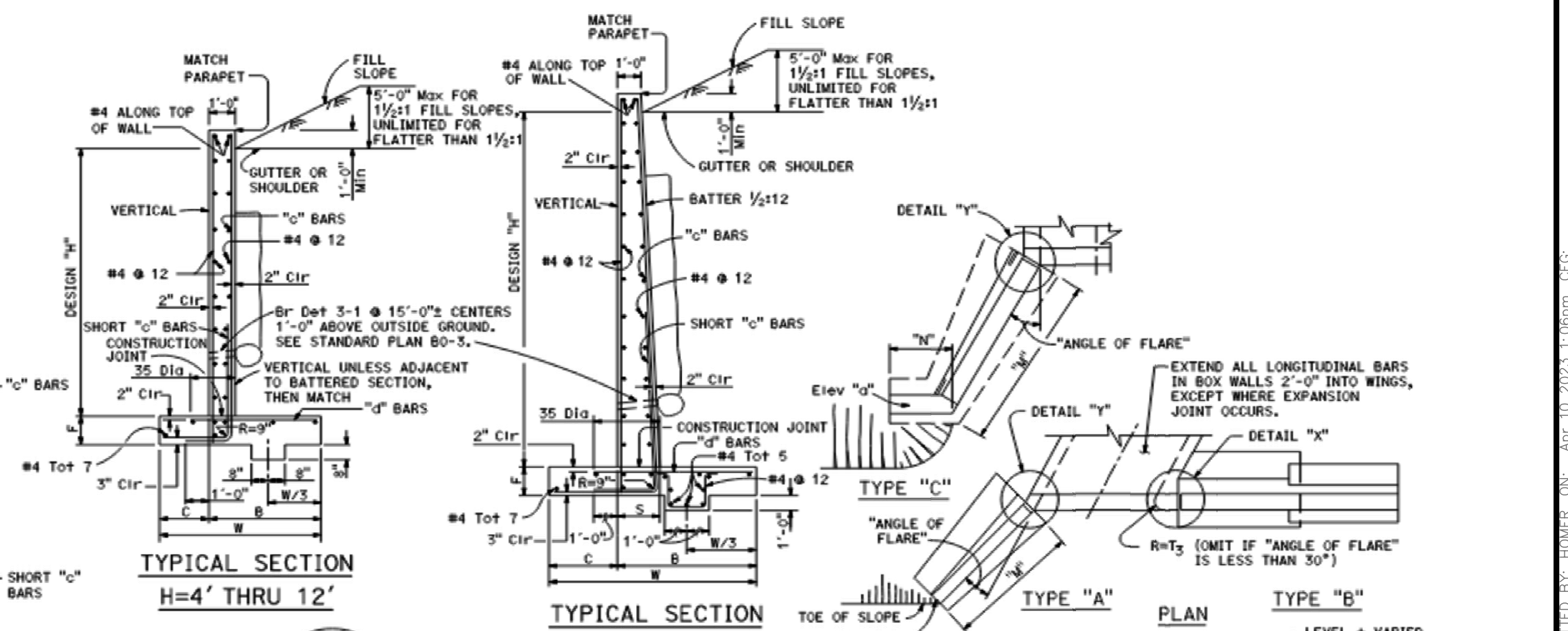


DOUBLE RCB ACCESS CULVERT PROFILE

SPAN, S	10'										12'										14'									
	10'	20'	30'	40'	50'	60'	70'	80'	90'	100'	10'	20'	30'	40'	50'	60'	70'	80'	90'	100'	10'	20'	30'	40'	50'	60'	70'	80'	90'	100'
MAXIMUM EARTH COVER	10'	20'	30'	40'	50'	60'	70'	80'	90'	100'	10'	20'	30'	40'	50'	60'	70'	80'	90'	100'	10'	20'	30'	40'	50'	60'	70'	80'	90'	100'
ROOF	12"	12"	12"	12"	12"	12"	12"	12"	12"	12"	12"	12"	12"	12"	12"	12"	12"	12"	12"	12"	12"	12"	12"	12"	12"	12"	12"	12"	12"	12"
WALLS	12"	12"	12"	12"	12"	12"	12"	12"	12"	12"	12"	12"	12"	12"	12"	12"	12"	12"	12"	12"	12"	12"	12"	12"	12"	12"	12"	12"	12"	12"
INVERT	12"	12"	12"	12"	12"	12"	12"	12"	12"	12"	12"	12"	12"	12"	12"	12"	12"	12"	12"	12"	12"	12"	12"	12"	12"	12"	12"	12"	12"	12"
REINFORCEMENT	[Detailed reinforcement specifications for various span and height combinations]																													
CONCRETE	[Concrete strength and mix design specifications]																													
SOIL PRESSURE	[Soil pressure data for various span and height combinations]																													



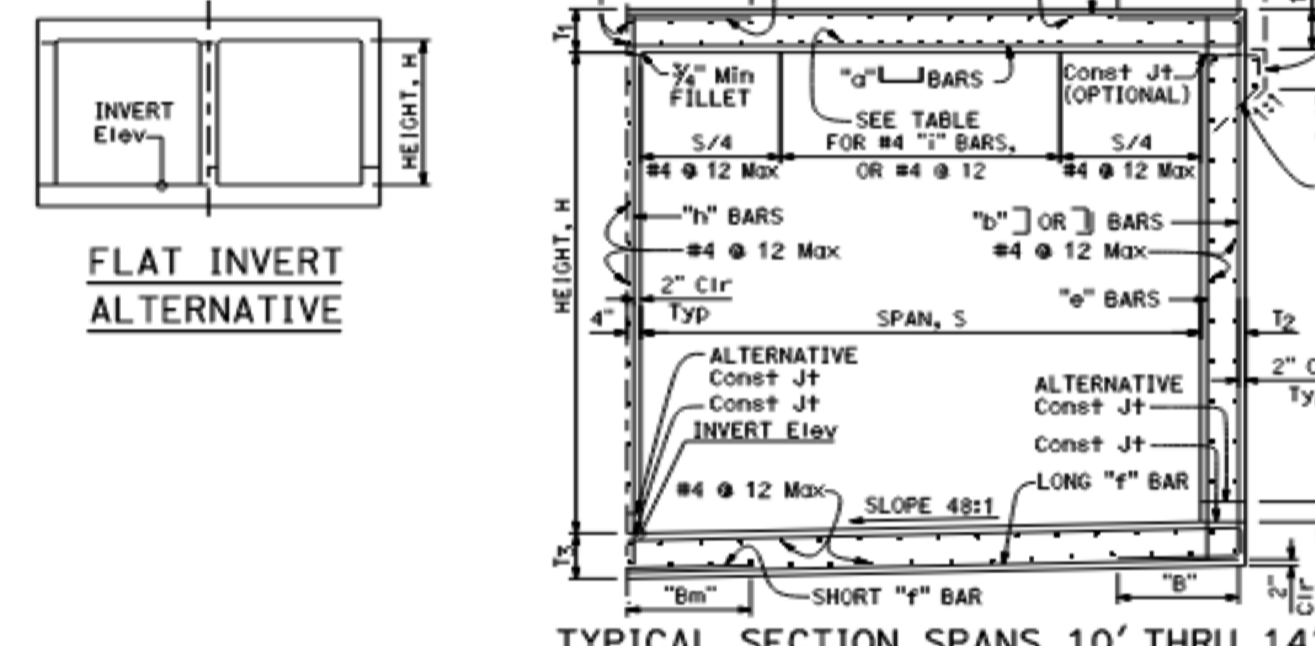
W	4'	5'	6'	7'	8'	9'	10'	11'	12'	13'	14'	15'	16'
C	1'-5"	1'-7"	1'-9"	1'-11"	2'-1"	2'-3"	2'-5"	2'-7"	2'-9"	2'-11"	3'-1"	3'-3"	3'-5"
B	4'-2"	4'-7"	4'-11"	5'-2"	5'-7"	5'-10"	6'-0"	6'-4"	6'-8"	6'-11"	7'-0"	7'-4"	7'-8"
F	1'-2"	1'-2"	1'-2"	1'-2"	1'-2"	1'-2"	1'-3"	1'-3"	1'-3"	1'-3"	1'-3"	1'-3"	1'-3"



BOX CULVERT WINGWALLS

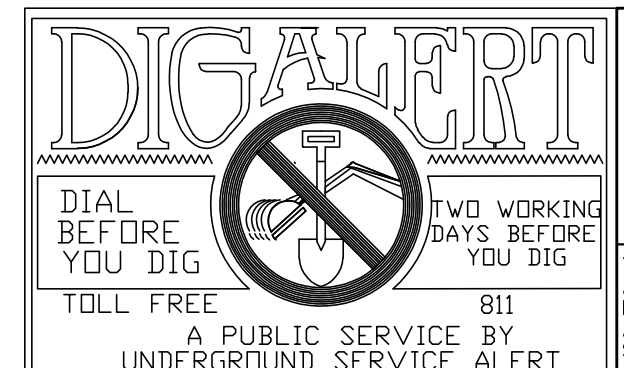
N.T.S.
2022 CALTRANS STD. D84

COUNTY OVERSIGHT ENGINEER
 REGISTRATION NUMBER
 DATE SIGNED
 APPROVED AS TO COMPLIANCE WITH APPLICABLE COUNTY STANDARDS AND PRACTICES



CAST-IN-PLACE REINFORCED CONCRETE DOUBLE BOX CULVERT

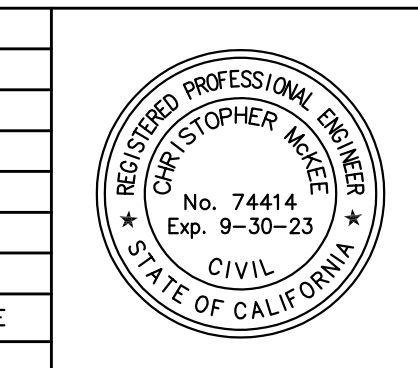
N.T.S.
2022 CALTRANS STD. D81



NOTE: WORK CONTAINED WITHIN THESE PLANS SHALL NOT COMMENCE UNTIL AN ENFORCEMENT PERMIT AND/OR A GRADING PERMIT HAS BEEN OBTAINED BY THE CONTRACTOR.

THE PRIVATE ENGINEER SIGNING THESE PLANS IS RESPONSIBLE FOR ASSURING THE ACCURACY AND ACCEPTABILITY OF THE DESIGN HEREIN. IN THE EVENT OF DISCREPANCIES ARISING AFTER COUNTY APPROVAL OR DURING CONSTRUCTION, THE PRIVATE ENGINEER SHALL BE RESPONSIBLE FOR DETERMINING AN ACCEPTABLE SOLUTION AND REVISING THE PLANS FOR APPROVAL BY THE COUNTY.

MARK	BY	DATE	REVISIONS	APPR	DATE



ORC Engineering, Inc.
Civil Engineering/Land Surveying/Land Planning

160 S. Old Springs Road
Suite 210
Anaheim Hills, CA 92808
714-685-6860

BENCHMARK:
A STANDARD U.S.C. & G.S. BRASS DISC STAMPED "Z 1143 1961" IN A CONCRETE POST ALONG THE A.T.S.F. RAILROAD SOUTH OF VAN BUREN BOULEVARD.
RIVERSIDE COUNTY SURVEYORS
POINT ID 800-43-68
DATUM: NAD83 ADJ. 1971
ELEVATION 1532.70
SCALE:
H: V:

MS 4421 IP 220048	SHEET NO.
COUNTY OF RIVERSIDE	8
STREET IMPROVEMENT PLAN	OF 8 SHTS
VILLAGE WEST EXTENSION	
DOUBLE RCB ACCESS CULVERT	
FOR: W.O. COUNTY FILE NO.	

CHRISTOPHER MCKEE R.C.E. 74414 DATE